

Product datasheet for **TA358919**

HPS6 Rabbit Polyclonal Antibody

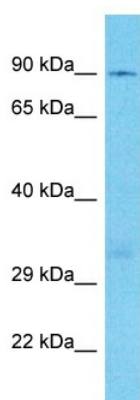
Product data:

Product Type:	Primary Antibodies
Applications:	WB
Reactivity:	Human
Host:	Rabbit
Clonality:	Polyclonal
Immunogen:	The immunogen is a synthetic peptide directed towards the N-terminal region of Human HPS6
Specificity:	Expected reactivity: Human
Formulation:	Liquid. Purified antibody supplied in 1x PBS buffer with 0.09% (w/v) sodium azide and 2% sucrose. <i>Note that this product is shipped as lyophilized powder to China customers.</i>
Concentration:	lot specific
Purification:	Affinity Purified
Conjugation:	Unconjugated
Storage:	For short term use, store at 2-8°C up to 1 week. For long term storage, store at -20°C in small aliquots to prevent freeze-thaw cycles.
Stability:	Shelf life: one year from despatch.
Predicted Protein Size:	85kDa
Gene Name:	HPS6, biogenesis of lysosomal organelles complex 2 subunit 3
Database Link:	NP_079023 Entrez Gene 79803 Human Q86YV9
Background:	This intronless gene encodes a protein that may play a role in organelle biogenesis associated with melanosomes, platelet dense granules, and lysosomes. This protein interacts with Hermansky-Pudlak syndrome 5 protein. Mutations in this gene are associated with Hermansky-Pudlak syndrome type 6.
Synonyms:	FLJ22501; MGC20522; RP11-302K17.1; Ru



[View online »](#)

Product images:



Host: Rabbit
Target Name: HPS6
Sample Tissue: HCT15 Cell Lysate
Antibody Dilution: 1.0 μ g/ml

Host: Rabbit
Target Name: HPS6
Sample Type: HCT15 Whole Cell lysates
Antibody Dilution: 1.0 μ g/ml