

## Product datasheet for **TA358918**

### **KRT71 Rabbit Polyclonal Antibody**

#### **Product data:**

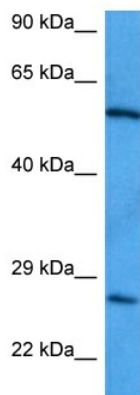
Product Type:	Primary Antibodies
Applications:	WB
Reactivity:	Human
Host:	Rabbit
Clonality:	Polyclonal
Immunogen:	The immunogen is a synthetic peptide directed towards the middle region of human KRT71
Specificity:	<b>Expected reactivity:</b> Human <b>Homology:</b> Cow: 100%; Dog: 100%; Horse: 100%; Human: 100%; Mouse: 93%; Pig: 100%; Rabbit: 100%; Rat: 93%; Sheep: 100%
Formulation:	Liquid. Purified antibody supplied in 1x PBS buffer with 0.09% (w/v) sodium azide and 2% sucrose. <i>Note that this product is shipped as lyophilized powder to China customers.</i>
Concentration:	lot specific
Purification:	Affinity purified
Conjugation:	Unconjugated
Storage:	For short term use, store at 2-8°C up to 1 week. For long term storage, store at -20°C in small aliquots to prevent freeze-thaw cycles.
Stability:	Shelf life: one year from despatch.
Predicted Protein Size:	57 kDa
Gene Name:	keratin 71
Database Link:	<a href="#">NP_258259</a> <a href="#">Entrez Gene 112802 Human</a> <a href="#">Q3SY84</a>
Background:	Keratins are intermediate filament proteins responsible for the structural integrity of epithelial cells and are subdivided into epithelial keratins and hair keratins. This gene encodes a protein that is expressed in the inner root sheath of hair follicles. The type II keratins are clustered in a region of chromosome 12q13.



[View online »](#)

**Synonyms:** CK-71; Cytokeratin-71; hK6irs; hK6irs1; K6IRS1; K71; KB34; Keratin-71; KRT6IRS; KRT6IRS1; MGC119390; MGC119391

### Product images:



Host: Rabbit  
Target Name: KRT71  
Sample Type: Testicular Tumor Lysate  
Antibody Dilution: 1.0 $\mu$ g/ml

Host: Rabbit  
Target Name: KRT71  
Sample Tissue: Human Testicular Tumor lysates  
Antibody Dilution: 1 $\mu$ g/ml