

Product datasheet for **TA358914**

TREML1 Rabbit Polyclonal Antibody

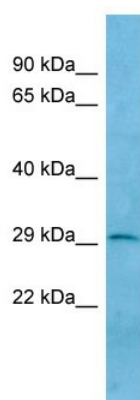
Product data:

Product Type:	Primary Antibodies
Applications:	WB
Reactivity:	Human
Host:	Rabbit
Clonality:	Polyclonal
Specificity:	Expected reactivity: Human Homology: Human: 100%
Formulation:	Liquid. Purified antibody supplied in 1x PBS buffer with 0.09% (w/v) sodium azide and 2% sucrose. <i>Note that this product is shipped as lyophilized powder to China customers.</i>
Concentration:	lot specific
Purification:	Affinity Purified
Conjugation:	Unconjugated
Storage:	For short term use, store at 2-8°C up to 1 week. For long term storage, store at -20°C in small aliquots to prevent freeze-thaw cycles.
Stability:	Shelf life: one year from despatch.
Predicted Protein Size:	31kDa
Gene Name:	triggering receptor expressed on myeloid cells like 1
Database Link:	NP_835468 Entrez Gene 340205 Human Q86YW5
Background:	TREML1 is located in a gene cluster on chromosome 6 with the single Ig variable (IgV) domain activating receptors TREM1 and TREM2, but it has distinct structural and functional properties. TREML1 enhances calcium signaling in an SHP2-dependent manner.
Synonyms:	dj238O23.3; GLTL1825; MGC119173; PRO3438; TLT-1; TLT1
Protein Families:	Druggable Genome, Transmembrane



[View online »](#)

Product images:



Host: Rabbit
Target Name: TREML1
Antibody Dilution: 1.0ug/ml
Sample Type: Human Placenta