

Product datasheet for **TA358913**

NABC1 (BCAS1) Rabbit Polyclonal Antibody

Product data:

Product Type:	Primary Antibodies
Applications:	WB
Reactivity:	Human
Host:	Rabbit
Clonality:	Polyclonal
Immunogen:	The immunogen is a synthetic peptide directed towards the C terminal region of human BCAS1
Specificity:	Expected reactivity: Human Homology: Cow: 79%; Dog: 92%; Horse: 100%; Human: 100%; Pig: 100%; Rat: 79%
Formulation:	Liquid. Purified antibody supplied in 1x PBS buffer with 0.09% (w/v) sodium azide and 2% sucrose. <i>Note that this product is shipped as lyophilized powder to China customers.</i>
Concentration:	lot specific
Purification:	Affinity purified
Conjugation:	Unconjugated
Storage:	For short term use, store at 2-8°C up to 1 week. For long term storage, store at -20°C in small aliquots to prevent freeze-thaw cycles.
Stability:	Shelf life: one year from despatch.
Predicted Protein Size:	62 kDa
Gene Name:	breast carcinoma amplified sequence 1
Database Link:	NP_003648 Entrez Gene 8537 Human O75363



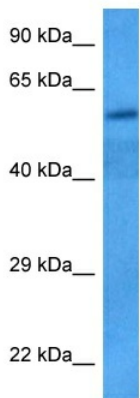
[View online »](#)

Background:

This gene resides in a region at 20q13 which is amplified in a variety of tumor types and associated with more aggressive tumor phenotypes. Among the genes identified from this region, it was found to be highly expressed in three amplified breast cancer cell lines and in one breast tumor without amplification at 20q13.2. However, this gene is not in the common region of maximal amplification and its expression was not detected in the breast cancer cell line MCF7, in which this region is highly amplified. Although not consistently expressed, this gene is a candidate oncogene. Two transcript variants encoding different isoforms have been found for this gene.

Synonyms:

AIBC1; NABC1

Product images:

Host: Rabbit
Target Name: BCAS1
Sample Type: Testicular Tumor Lysate
Antibody Dilution: 1.0 μ g/ml

Host: Rabbit
Target Name: BCAS1
Sample Tissue: Human Testicular Tumor lysates
Antibody Dilution: 1 μ g/ml