

Product datasheet for **TA358912**

TRAR4 (TAAR6) Rabbit Polyclonal Antibody

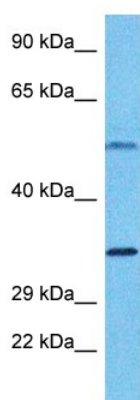
Product data:

Product Type:	Primary Antibodies
Applications:	WB
Reactivity:	Human
Host:	Rabbit
Clonality:	Polyclonal
Immunogen:	The immunogen is a synthetic peptide directed towards the C-terminal region of Human TAAR6
Specificity:	Expected reactivity: Cow, Horse, Human, Mouse, Pig, Rabbit, Rat Homology: Cow: 86%; Horse: 79%; Human: 100%; Mouse: 93%; Pig: 86%; Rabbit: 79%; Rat: 79%
Formulation:	Liquid. Purified antibody supplied in 1x PBS buffer with 0.09% (w/v) sodium azide and 2% sucrose. <i>Note that this product is shipped as lyophilized powder to China customers.</i>
Concentration:	lot specific
Purification:	Affinity Purified
Conjugation:	Unconjugated
Storage:	For short term use, store at 2-8°C up to 1 week. For long term storage, store at -20°C in small aliquots to prevent freeze-thaw cycles.
Stability:	Shelf life: one year from despatch.
Predicted Protein Size:	37kDa
Gene Name:	trace amine associated receptor 6
Database Link:	NP_778237 Entrez Gene 319100 Human Q96R18
Background:	This gene encodes a seven-transmembrane G-protein-coupled receptor that likely functions as a receptor for endogenous trace amines. Mutations in this gene may be associated with schizophrenia.
Synonyms:	RP11-295F4.3; SCZD5; TA4; TaR-4; TAR4; TRAR4



[View online »](#)

Product images:



Host: Rabbit
Target Name: TAAR6
Sample Tissue: MCF7 Cell Lysate
Antibody Dilution: 1.0 μ g/ml

Host: Rabbit
Target Name: TAAR6
Sample Type: MCF7 Whole Cell lysates
Antibody Dilution: 1 μ g/ml