

Product datasheet for **TA358908**

PHOSPHO1 Rabbit Polyclonal Antibody

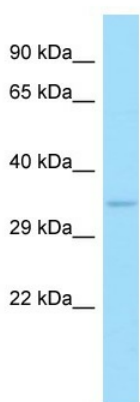
Product data:

Product Type:	Primary Antibodies
Applications:	WB
Reactivity:	Human
Host:	Rabbit
Clonality:	Polyclonal
Specificity:	This antibody is 100% homologous to both isoforms of human PHOSPHO1.
	Expected reactivity: Cow, Dog, Horse, Human, Mouse, Pig, Rabbit, Rat
	Homology: Cow: 100%; Dog: 100%; Horse: 100%; Human: 100%; Mouse: 100%; Pig: 100%; Rabbit: 100%; Rat: 100%
Formulation:	Liquid. Purified antibody supplied in 1x PBS buffer with 0.09% (w/v) sodium azide and 2% sucrose. <i>Note that this product is shipped as lyophilized powder to China customers.</i>
Concentration:	lot specific
Purification:	Affinity Purified
Conjugation:	Unconjugated
Storage:	For short term use, store at 2-8°C up to 1 week. For long term storage, store at -20°C in small aliquots to prevent freeze-thaw cycles.
Stability:	Shelf life: one year from despatch.
Predicted Protein Size:	32kDa
Gene Name:	phosphoethanolamine/phosphocholine phosphatase
Database Link:	NP_001137276 Entrez Gene 162466 Human Q8TCT1
Background:	The function of this protein remains unknown.
Synonyms:	PHOSPHO1
Protein Families:	Druggable Genome
Protein Pathways:	Glycerophospholipid metabolism

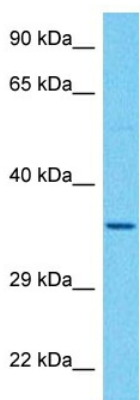


[View online »](#)

Product images:



Host: Rabbit
 Target Name: PHOSPHO1
 Antibody Dilution: 1.0ug/ml
 Sample Type: Hela cell lysate



Host: Rabbit
 Target Name: PHOSPHO1
 Sample Type: Jurkat Cell Lysate
 Antibody Dilution: 1.0µg/ml

Host: Rabbit
 Target Name: PHOSPHO1
 Sample Tissue: Human Jurkat Whole Cell
 Antibody Dilution: 1 ug/ml