

## Product datasheet for **TA358904**

### Matrilin 4 (MATN4) Rabbit Polyclonal Antibody

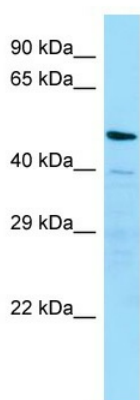
#### Product data:

Product Type:	Primary Antibodies
Applications:	WB
Reactivity:	Human
Host:	Rabbit
Clonality:	Polyclonal
Specificity:	<b>Expected reactivity:</b> Cow, Dog, Guinea Pig, Horse, Human, Mouse, Rabbit, Rat <b>Homology:</b> Cow: 100%; Dog: 100%; Guinea Pig: 93%; Horse: 100%; Human: 100%; Mouse: 100%; Rabbit: 92%; Rat: 92%
Formulation:	Liquid. Purified antibody supplied in 1x PBS buffer with 0.09% (w/v) sodium azide and 2% sucrose.
Concentration:	lot specific
Purification:	Affinity Purified
Conjugation:	Unconjugated
Storage:	For short term use, store at 2-8°C up to 1 week. For long term storage, store at -20°C in small aliquots to prevent freeze-thaw cycles.
Stability:	Shelf life: one year from despatch.
Predicted Protein Size:	53kDa
Gene Name:	matrilin 4
Database Link:	<a href="#">NP_085095</a> <a href="#">Entrez Gene 8785 Human</a> <a href="#">A6NNA4</a>
Background:	This gene encodes a member of von Willebrand factor A domain containing protein family. The proteins of this family are thought to be involved in the formation of filamentous networks in the extracellular matrices of various tissues. The specific function of this gene product has not yet been determined. Three alternatively spliced variants have been described.
Synonyms:	FLJ14417; HE6WCR54; OTTHUMP00000031671
Protein Families:	Secreted Protein



[View online »](#)

Product images:



Host: Rabbit  
Target Name: MATN4  
Antibody Dilution: 1.0ug/ml  
Sample Type: HepG2 cell lysate