

Product datasheet for **TA358903**

LILRA3 Rabbit Polyclonal Antibody

Product data:

Product Type:	Primary Antibodies
Applications:	WB
Reactivity:	Human
Host:	Rabbit
Clonality:	Polyclonal
Specificity:	Expected reactivity: Human Homology: Human: 100%
Formulation:	Liquid. Purified antibody supplied in 1x PBS buffer with 0.09% (w/v) sodium azide and 2% sucrose. <i>Note that this product is shipped as lyophilized powder to China customers.</i>
Concentration:	lot specific
Purification:	Affinity Purified
Conjugation:	Unconjugated
Storage:	For short term use, store at 2-8°C up to 1 week. For long term storage, store at -20°C in small aliquots to prevent freeze-thaw cycles.
Stability:	Shelf life: one year from despatch.
Predicted Protein Size:	47kDa
Gene Name:	leukocyte immunoglobulin like receptor A3
Database Link:	NP_006856 Entrez Gene 11026 Human Q8N6C8
Background:	Leukocyte Ig-like receptors (LIRs) are a family of immunoreceptors expressed predominantly on monocytes and B cells and at lower levels on dendritic cells and natural killer (NK) cells. All LIRs in subfamily B have an inhibitory function. LIRs in subfamily A, with short cytoplasmic domains lacking an immunoreceptor tyrosine-based inhibitory motif (ITIM) and with transmembrane regions containing a charged arginine residue, may initiate stimulatory cascades. One member of subfamily A (LILRA3) lacks a transmembrane region and is presumed to be a soluble receptor.

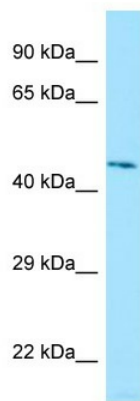


[View online »](#)

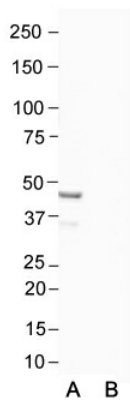
Synonyms: CD85E; e3; HM31; HM43; ILT-6; ILT6; LIR-4; LIR4

Protein Families: Secreted Protein

Product images:



Host: Rabbit
 Target Name: LILRA3
 Antibody Dilution: 1.0ug/ml
 Sample Type: Human Kidney



Anti-LILRA3 Western Blot & Peptide Block Validation

Lot Number: QC35754
 Sample Type: Human OVCAR-3
 Lane A: Primary Antibody
 Lane B: Primary Antibody + Blocking Peptide
 Primary Antibody Concentration: 1.0ug/ml
 Peptide Concentration: 2.0ug/ml
 Lysate Quantity: 25ug/lane

Host: Rabbit
 Target Name: LILRA3
 Sample Type: Human OVCAR-3
 Lane A: Primary Antibody
 Lane B: Primary Antibody + Blocking Peptide
 Primary Antibody Concentration: 1.0 ug/ml
 Peptide Concentration: 2.0 ug/ml
 Lysate Quantity: 25 ug/lane