

Product datasheet for **TA358902**

IWS1 Rabbit Polyclonal Antibody

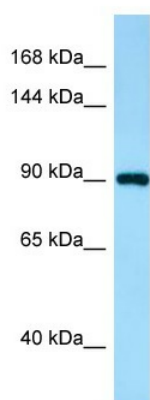
Product data:

Product Type:	Primary Antibodies
Applications:	WB
Reactivity:	Human
Host:	Rabbit
Clonality:	Polyclonal
Specificity:	Expected reactivity: Cow, Dog, Goat, Guinea Pig, Horse, Human, Mouse, Rabbit, Rat, Zebrafish Homology: Cow: 93%; Dog: 93%; Goat: 93%; Guinea Pig: 93%; Horse: 93%; Human: 100%; Mouse: 79%; Rabbit: 79%; Rat: 93%; Zebrafish: 86%
Formulation:	Liquid. Purified antibody supplied in 1x PBS buffer with 0.09% (w/v) sodium azide and 2% sucrose. <i>Note that this product is shipped as lyophilized powder to China customers.</i>
Concentration:	lot specific
Purification:	Affinity Purified
Conjugation:	Unconjugated
Storage:	For short term use, store at 2-8°C up to 1 week. For long term storage, store at -20°C in small aliquots to prevent freeze-thaw cycles.
Stability:	Shelf life: one year from despatch.
Predicted Protein Size:	92kDa
Gene Name:	IWS1, SUPT6H interacting protein
Database Link:	NP_060439 Entrez Gene 55677 Human Q96ST2
Background:	The function of this protein remains unknown.
Synonyms:	DKFZp761G0123; FLJ10006; FLJ14655; FLJ32319; IWS1L; MGC126375; MGC126376



[View online »](#)

Product images:



Host: Rabbit
Target Name: IWS1
Antibody Dilution: 1.0ug/ml
Sample Type: Human Kidney