

Product datasheet for **TA358899**

HLA-DOA Rabbit Polyclonal Antibody

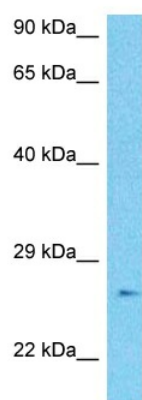
Product data:

Product Type:	Primary Antibodies
Applications:	WB
Reactivity:	Human
Host:	Rabbit
Clonality:	Polyclonal
Immunogen:	The immunogen is a synthetic peptide directed towards the N-terminal region of Human DOA
Specificity:	Expected reactivity: Cow, Horse, Human, Pig, Rat Homology: Cow: 83%; Horse: 85%; Human: 100%; Pig: 86%; Rat: 79%
Formulation:	Liquid. Purified antibody supplied in 1x PBS buffer with 0.09% (w/v) sodium azide and 2% sucrose. <i>Note that this product is shipped as lyophilized powder to China customers.</i>
Concentration:	lot specific
Purification:	Affinity purified
Conjugation:	Unconjugated
Storage:	For short term use, store at 2-8°C up to 1 week. For long term storage, store at -20°C in small aliquots to prevent freeze-thaw cycles.
Stability:	Shelf life: one year from despatch.
Predicted Protein Size:	27kDa
Gene Name:	major histocompatibility complex, class II, DO alpha
Database Link:	NP_002110 Entrez Gene 3111 Human P06340
Background:	HLA-DOA belongs to the HLA class II alpha chain paralogues. HLA-DOA forms a heterodimer with HLA-DOB. The heterodimer, HLA-DO, is found in lysosomes in B cells and regulates HLA-DM-mediated peptide loading on MHC class II molecules. In comparison with classical HLA class II molecules, this gene exhibits very little sequence variation, especially at the protein level.



[View online »](#)

Product images:



Host: Rabbit
Target Name: DOA
Sample Tissue: MDA-MB-435s Cell Lysate
Antibody Dilution: 1.0 μ g/ml

Host: Rabbit
Target Name: DOA
Sample Type: MDA-MB-435s Whole Cell lysates
Antibody Dilution: 1.0 μ g/ml