

Product datasheet for **TA358898**

CCDC98 (FAM175A) Rabbit Polyclonal Antibody

Product data:

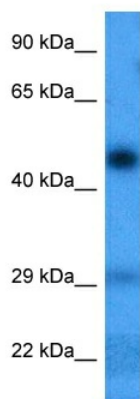
Product Type:	Primary Antibodies
Applications:	WB
Reactivity:	Human
Host:	Rabbit
Clonality:	Polyclonal
Immunogen:	The immunogen is a synthetic peptide directed towards the C terminal region of human FAM175A
Specificity:	Expected reactivity: Human Homology: Human: 100%
Formulation:	Liquid. Purified antibody supplied in 1x PBS buffer with 0.09% (w/v) sodium azide and 2% sucrose. <i>Note that this product is shipped as lyophilized powder to China customers.</i>
Concentration:	lot specific
Purification:	Affinity purified
Conjugation:	Unconjugated
Storage:	For short term use, store at 2-8°C up to 1 week. For long term storage, store at -20°C in small aliquots to prevent freeze-thaw cycles.
Stability:	Shelf life: one year from despatch.
Predicted Protein Size:	47 kDa
Gene Name:	family with sequence similarity 175 member A
Database Link:	NP_620775.2 Entrez Gene 84142 Human Q6UWZ7
Background:	This gene encodes a protein that binds to the C-terminal repeats of breast cancer 1 (BRCA1) through a phospho-SXXF motif. The encoded protein recruits ubiquitin interaction motif containing 1 protein to BRCA1 protein and is required for DNA damage resistance, DNA repair, and cell cycle checkpoint control. Pseudogenes of this gene are found on chromosomes 3 and 8. Alternative splicing results in multiple transcript variants.



[View online »](#)

Synonyms: ABRA1; CCDC98; FLJ11520; FLJ12642; FLJ13614

Product images:



Host: Rabbit
Target Name: FAM175A
Sample Type: Lung Tumor Lysate
Antibody Dilution: 1.0 μ g/ml

Host: Rabbit
Target Name: FAM175A
Sample Tissue: Human Lung Tumor lysates
Antibody Dilution: 1 μ g/ml