

Product datasheet for **TA358897**

CCDC98 (FAM175A) Rabbit Polyclonal Antibody

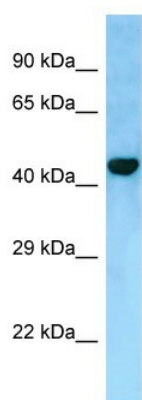
Product data:

Product Type:	Primary Antibodies
Applications:	WB
Reactivity:	Human
Host:	Rabbit
Clonality:	Polyclonal
Specificity:	Expected reactivity: Cow, Dog, Horse, Human, Pig, Rabbit Homology: Cow: 85%; Dog: 79%; Horse: 100%; Human: 100%; Pig: 79%; Rabbit: 100%
Formulation:	Liquid. Purified antibody supplied in 1x PBS buffer with 0.09% (w/v) sodium azide and 2% sucrose. <i>Note that this product is shipped as lyophilized powder to China customers.</i>
Concentration:	lot specific
Purification:	Affinity Purified
Conjugation:	Unconjugated
Storage:	For short term use, store at 2-8°C up to 1 week. For long term storage, store at -20°C in small aliquots to prevent freeze-thaw cycles.
Stability:	Shelf life: one year from despatch.
Predicted Protein Size:	47kDa
Gene Name:	family with sequence similarity 175 member A
Database Link:	NP_620775 Entrez Gene 84142 Human Q6UWZ7
Background:	This gene encodes a protein that binds to the C-terminal repeats of breast cancer 1 (BRCA1) through a phospho-SXXF motif. The encoded protein recruits ubiquitin interaction motif containing 1 protein to BRCA1 protein and is required for DNA damage resistance, DNA repair, and cell cycle checkpoint control. Pseudogenes of this gene are found on chromosomes 3 and 8. Alternative splicing results in multiple transcript variants.
Synonyms:	ABRA1; CCDC98; FLJ11520; FLJ12642; FLJ13614



[View online »](#)

Product images:



Host: Rabbit
Target Name: FAM175A
Antibody Dilution: 1.0ug/ml
Sample Type: 293T cell lysate