

Product datasheet for **TA358894**

CRMP3 (DPYSL4) Rabbit Polyclonal Antibody

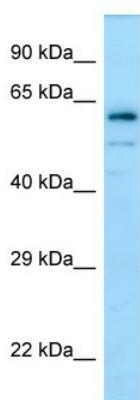
Product data:

Product Type:	Primary Antibodies
Applications:	WB
Reactivity:	Human
Host:	Rabbit
Clonality:	Polyclonal
Specificity:	Expected reactivity: Cow, Dog, Guinea Pig, Horse, Human, Mouse, Rabbit, Rat, Zebrafish Homology: Cow: 100%; Dog: 100%; Guinea Pig: 100%; Horse: 100%; Human: 100%; Mouse: 100%; Rabbit: 100%; Rat: 100%; Zebrafish: 79%
Formulation:	Liquid. Purified antibody supplied in 1x PBS buffer with 0.09% (w/v) sodium azide and 2% sucrose. <i>Note that this product is shipped as lyophilized powder to China customers.</i>
Concentration:	lot specific
Purification:	Affinity Purified
Conjugation:	Unconjugated
Storage:	For short term use, store at 2-8°C up to 1 week. For long term storage, store at -20°C in small aliquots to prevent freeze-thaw cycles.
Stability:	Shelf life: one year from despatch.
Predicted Protein Size:	62kDa
Gene Name:	dihydropyrimidinase like 4
Database Link:	NP_006417 Entrez Gene 10570 Human Q14531
Background:	DPYSL4 is necessary for signaling by class 3 semaphorins and subsequent remodeling of the cytoskeleton. DPYSL4 plays a role in axon guidance, neuronal growth cone collapse and cell migration.
Synonyms:	CRMP-3; CRMP3; DRP-4; ULIP4



[View online »](#)

Product images:



Host: Rabbit
Target Name: DPYSL4
Antibody Dilution: 1.0ug/ml
Sample Type: Human brain