

Product datasheet for **TA358888**

SRGAP2 Rabbit Polyclonal Antibody

Product data:

Product Type:	Primary Antibodies
Applications:	WB
Reactivity:	Human
Host:	Rabbit
Clonality:	Polyclonal
Immunogen:	The immunogen is a synthetic peptide directed towards the N terminal region of human SRGAP2
Specificity:	Expected reactivity: Human Homology: Cow: 87%; Dog: 100%; Guinea Pig: 87%; Horse: 100%; Human: 100%; Mouse: 100%; Pig: 100%; Rabbit: 100%; Rat: 100%; Zebrafish: 87%
Formulation:	Liquid. Purified antibody supplied in 1x PBS buffer with 0.09% (w/v) sodium azide and 2% sucrose. <i>Note that this product is shipped as lyophilized powder to China customers.</i>
Concentration:	lot specific
Purification:	Affinity purified
Conjugation:	Unconjugated
Storage:	For short term use, store at 2-8°C up to 1 week. For long term storage, store at -20°C in small aliquots to prevent freeze-thaw cycles.
Stability:	Shelf life: one year from despatch.
Predicted Protein Size:	53 kDa
Gene Name:	SLIT-ROBO Rho GTPase activating protein 2
Database Link:	NP_001258799 Entrez Gene 23380 Human P0DJ10



[View online »](#)

Background:

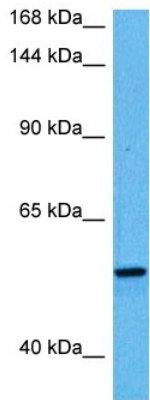
This locus encodes a member of the SLIT-ROBO Rho GTPase activating protein family. The encoded protein stimulates GTPase activity of Rac1, and plays a role in cortical neuron development. This locus has several paralogs on human chromosome 1 resulting from segmental duplication. While this locus itself is conserved among various species, the paralogs are found only in the genus Homo, and not in the genomes of non-human great apes. Alternatively spliced transcript variants have been described for this locus.

Synonyms:

FNBP2; KIAA0456; SRGAP3

Protein Pathways:

Axon guidance

Product images:

Host: Rabbit
Target Name: SRGAP2
Sample Type: Nerve Fiber Tumor Lysate
Antibody Dilution: 1.0µg/ml

Host: Rabbit
Target Name: SRGAP2
Sample Tissue: Human Nerve Fiber Tumor lysates
Antibody Dilution: 1ug/ml