

## Product datasheet for **TA358875**

### COX7A1 Rabbit Polyclonal Antibody

#### Product data:

Product Type:	Primary Antibodies
Applications:	WB
Reactivity:	Human
Host:	Rabbit
Clonality:	Polyclonal
Specificity:	<b>Expected reactivity:</b> Cow, Dog, Horse, Human, Mouse, Pig, Rabbit, Sheep, Zebrafish <b>Homology:</b> Cow: 79%; Dog: 79%; Horse: 79%; Human: 100%; Mouse: 75%; Pig: 79%; Rabbit: 77%; Sheep: 79%; Zebrafish: 79%
Formulation:	Liquid. Purified antibody supplied in 1x PBS buffer with 0.09% (w/v) sodium azide and 2% sucrose. <i>Note that this product is shipped as lyophilized powder to China customers.</i>
Concentration:	lot specific
Purification:	Affinity Purified
Conjugation:	Unconjugated
Storage:	For short term use, store at 2-8°C up to 1 week. For long term storage, store at -20°C in small aliquots to prevent freeze-thaw cycles.
Stability:	Shelf life: one year from despatch.
Predicted Protein Size:	9kDa
Gene Name:	cytochrome c oxidase subunit 7A1
Database Link:	<a href="#">NP_001855</a> <a href="#">Entrez Gene 1346 Human</a> <a href="#">P24310</a>



[View online »](#)

**Background:**

Cytochrome c oxidase (COX), the terminal component of the mitochondrial respiratory chain, catalyzes the electron transfer from reduced cytochrome c to oxygen. This component is a heteromeric complex consisting of 3 catalytic subunits encoded by mitochondrial genes and multiple structural subunits encoded by nuclear genes. The mitochondrially-encoded subunits function in electron transfer, and the nuclear-encoded subunits may function in the regulation and assembly of the complex. This nuclear gene encodes polypeptide 1 (muscle isoform) of subunit VIIa and the polypeptide 1 is present only in muscle tissues. Other polypeptides of subunit VIIa are present in both muscle and nonmuscle tissues, and are encoded by different genes.

**Synonyms:**

COX7A; COX7AH; COX7AM

**Protein Families:**

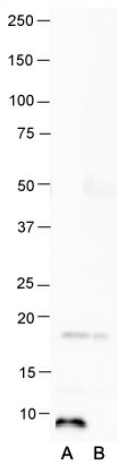
Transmembrane

**Protein Pathways:**

Alzheimer's disease, Cardiac muscle contraction, Huntington's disease, Oxidative phosphorylation, Parkinson's disease

**Product images:**

Host: Rabbit  
Target Name: COX7A1  
Antibody Dilution: 1.0ug/ml  
Sample Type: Human heart



**Anti-COX7A1 Western Blot & Peptide Block Validation**

Lot Number: QC35825

Sample Type: Human Heart

Lane A: Primary Antibody  
Lane B: Primary Antibody + Blocking Peptide

Primary Antibody Concentration: 1.0ug/ml  
Peptide Concentration: 2.0ug/ml  
Lysate Quantity: 25ug/lane

Host: Rabbit  
Target Name: COX7A1  
Sample Type: Human Heart  
Lane A: Primary Antibody  
Lane B: Primary Antibody + Blocking Peptide  
Primary Antibody Concentration: 1.0 ug/ml  
Peptide Concentration: 2.0 ug/ml  
Lysate Quantity: 25 ug/lane