

Product datasheet for **TA358874**

GPR105 (P2RY14) Rabbit Polyclonal Antibody

Product data:

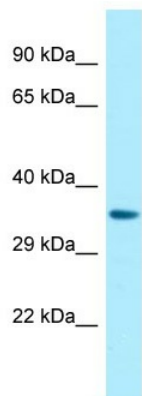
Product Type:	Primary Antibodies
Applications:	WB
Reactivity:	Human
Host:	Rabbit
Clonality:	Polyclonal
Specificity:	Expected reactivity: Cow, Dog, Human, Mouse, Pig, Rabbit, Rat Homology: Cow: 86%; Dog: 79%; Human: 100%; Mouse: 86%; Pig: 91%; Rabbit: 86%; Rat: 83%
Formulation:	Liquid. Purified antibody supplied in 1x PBS buffer with 0.09% (w/v) sodium azide and 2% sucrose. <i>Note that this product is shipped as lyophilized powder to China customers.</i>
Concentration:	lot specific
Purification:	Affinity Purified
Conjugation:	Unconjugated
Storage:	For short term use, store at 2-8°C up to 1 week. For long term storage, store at -20°C in small aliquots to prevent freeze-thaw cycles.
Stability:	Shelf life: one year from despatch.
Predicted Protein Size:	39kDa
Gene Name:	purinergic receptor P2Y14
Database Link:	NP_055694 Entrez Gene 9934 Human Q15391

Background: The product of this gene belongs to the family of G-protein coupled receptors, which contains several receptor subtypes with different pharmacological selectivity for various adenosine and uridine nucleotides. This receptor is a P2Y purinergic receptor for UDP-glucose and other UDP-sugars coupled to G-proteins. It has been implicated in extending the known immune system functions of P2Y receptors by participating in the regulation of the stem cell compartment, and it may also play a role in neuroimmune function. Two transcript variants encoding the same protein have been identified for this gene.



[View online »](#)

Synonyms: GPR105; KIAA0001; P2Y14
Protein Families: Druggable Genome, GPCR, Transmembrane
Protein Pathways: Neuroactive ligand-receptor interaction

Product images:

WB Suggested Anti-P2RY14 Antibody
Titration: 1.0 ug/ml
Positive Control: Fetal Heart