

Product datasheet for **TA358862**

LXN Rabbit Polyclonal Antibody

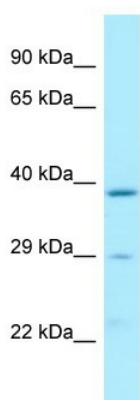
Product data:

Product Type:	Primary Antibodies
Applications:	WB
Reactivity:	Human, Mouse
Host:	Rabbit
Clonality:	Polyclonal
Specificity:	Expected reactivity: Cow, Dog, Goat, Guinea Pig, Horse, Human, Mouse, Pig, Rabbit, Rat Homology: Cow: 93%; Dog: 86%; Goat: 93%; Guinea Pig: 86%; Horse: 93%; Human: 100%; Mouse: 93%; Pig: 93%; Rabbit: 86%; Rat: 93%
Formulation:	Liquid. Purified antibody supplied in 1x PBS buffer with 0.09% (w/v) sodium azide and 2% sucrose. <i>Note that this product is shipped as lyophilized powder to China customers.</i>
Concentration:	lot specific
Purification:	Affinity Purified
Conjugation:	Unconjugated
Storage:	For short term use, store at 2-8°C up to 1 week. For long term storage, store at -20°C in small aliquots to prevent freeze-thaw cycles.
Stability:	Shelf life: one year from despatch.
Predicted Protein Size:	26kDa
Gene Name:	latexin
Database Link:	NP_064554 Entrez Gene 17035 Mouse Entrez Gene 56925 Human Q9BS40
Background:	This gene encodes the only known protein inhibitor of zinc-dependent metalloproteinases.
Synonyms:	ECl; latexin; MUM; TCI

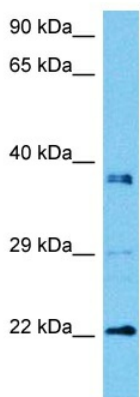


[View online »](#)

Product images:



WB Suggested Anti-LXN Antibody
 Titration: 1.0 ug/ml
 Positive Control: MCF7 Whole Cell
 LXN is supported by BioGPS gene expression data to be expressed in MCF7



Host: Rabbit
 Target Name: Lxn
 Sample Type: Mouse Testis Lysate
 Antibody Dilution: 1.0µg/ml

Host: Mouse
 Target Name: LXN
 Sample Tissue: Mouse Testis
 Antibody Dilution: 1ug/ml