

Product datasheet for **TA358858**

PAM16 Rabbit Polyclonal Antibody

Product data:

Product Type:	Primary Antibodies
Applications:	WB
Reactivity:	Human
Host:	Rabbit
Clonality:	Polyclonal
Specificity:	Expected reactivity: Dog, Human, Mouse, Pig, Rat Homology: Dog: 86%; Human: 100%; Mouse: 86%; Pig: 79%; Rat: 93%
Formulation:	Liquid. Purified antibody supplied in 1x PBS buffer with 0.09% (w/v) sodium azide and 2% sucrose. <i>Note that this product is shipped as lyophilized powder to China customers.</i>
Concentration:	lot specific
Purification:	Affinity Purified
Conjugation:	Unconjugated
Storage:	For short term use, store at 2-8°C up to 1 week. For long term storage, store at -20°C in small aliquots to prevent freeze-thaw cycles.
Stability:	Shelf life: one year from despatch.
Predicted Protein Size:	14kDa
Gene Name:	presequence translocase-associated motor 16 homolog (<i>S. cerevisiae</i>)
Database Link:	NP_057153 Entrez Gene 51025 Human Q9Y3D7
Background:	PAM16 regulates ATP-dependent protein translocation into the mitochondrial matrix and inhibits DNAJC19 stimulation of HSPA9/Mortalin ATPase activity.
Synonyms:	2010110I09Rik; AV006767; CGI-136; Magmas; Tim16; Timm16



[View online »](#)

Product images:



WB Suggested Anti-PAM16 Antibody
 Titration: 1.0 ug/ml
 Positive Control: HepG2 Whole Cell
 PAM16 is supported by BioGPS gene expression data to be expressed in HepG2

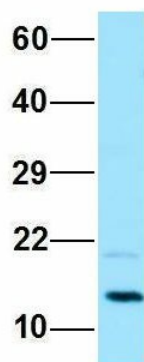
PAM16



Rabbit Anti-PAM16
 Sample Type: Human Jurkat
 Antibody Concentration: 1ug/mL

Host: Rabbit
 Target Name: PAM16
 Sample Type: Jurkat
 Antibody Dilution: 1.0ug/ml
 PAM16 is supported by BioGPS gene expression data to be expressed in Jurkat

PAM16



Rabbit Anti-PAM16
Sample Type: Human HeLa
Antibody Concentration: 1ug/mL

Host: Rabbit
Target Name: PAM16
Sample Type: HeLa
Antibody Dilution: 1.0ug/ml
PAM16 is supported by BioGPS gene expression data to be expressed in HeLa