

Product datasheet for **TA358854**

GRINA Rabbit Polyclonal Antibody

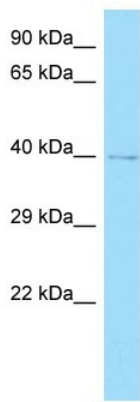
Product data:

Product Type:	Primary Antibodies
Applications:	WB
Reactivity:	Human
Host:	Rabbit
Clonality:	Polyclonal
Specificity:	Expected reactivity: Cow, Dog, Guinea Pig, Horse, Human, Mouse, Rabbit, Rat, Sheep, Zebrafish Homology: Cow: 100%; Dog: 100%; Guinea Pig: 100%; Horse: 100%; Human: 100%; Mouse: 85%; Rabbit: 100%; Rat: 100%; Sheep: 100%; Zebrafish: 85%
Formulation:	Liquid. Purified antibody supplied in 1x PBS buffer with 0.09% (w/v) sodium azide and 2% sucrose. <i>Note that this product is shipped as lyophilized powder to China customers.</i>
Concentration:	lot specific
Purification:	Affinity Purified
Conjugation:	Unconjugated
Storage:	For short term use, store at 2-8°C up to 1 week. For long term storage, store at -20°C in small aliquots to prevent freeze-thaw cycles.
Stability:	Shelf life: one year from despatch.
Predicted Protein Size:	41kDa
Gene Name:	glutamate ionotropic receptor NMDA type subunit associated protein 1
Database Link:	NP_000828 Entrez Gene 2907 Human Q7Z429
Background:	The function of this protein remains unknown.
Synonyms:	HNRGW; MGC99687; NMDARA1; TMBIM3
Protein Families:	Druggable Genome, Transmembrane



[View online »](#)

Product images:



Host: Rabbit
 Target Name: GRINA
 Antibody Dilution: 1.0ug/ml
 Sample Type: NCI-H226 cell lysate



Anti-GRINA Western Blot & Peptide Block Validation

Lot Number: QC35660
 Sample Type: Human NCI-H226
 Lane A: Primary Antibody
 Lane B: Primary Antibody + Blocking Peptide
 Primary Antibody Concentration: 1.0ug/ml
 Peptide Concentration: 2.0ug/ml
 Lysate Quantity: 25ug/lane

Host: Rabbit
 Target Name: GRINA
 Sample Type: Human NCI-H226
 Lane A: Primary Antibody
 Lane B: Primary Antibody + Blocking Peptide
 Primary Antibody Concentration: 1.0 ug/ml
 Peptide Concentration: 2.0 ug/ml
 Lysate Quantity: 25 ug/lane

A B