

Product datasheet for **TA358850**

SLC22A9 Rabbit Polyclonal Antibody

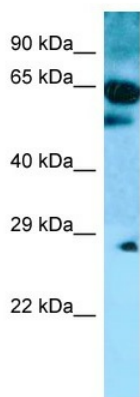
Product data:

Product Type:	Primary Antibodies
Applications:	WB
Reactivity:	Human
Host:	Rabbit
Clonality:	Polyclonal
Specificity:	Expected reactivity: Human Homology: Human: 100%
Formulation:	Liquid. Purified antibody supplied in 1x PBS buffer with 0.09% (w/v) sodium azide and 2% sucrose.
Concentration:	lot specific
Purification:	Affinity Purified
Conjugation:	Unconjugated
Storage:	For short term use, store at 2-8°C up to 1 week. For long term storage, store at -20°C in small aliquots to prevent freeze-thaw cycles.
Stability:	Shelf life: one year from despatch.
Predicted Protein Size:	62kDa
Gene Name:	solute carrier family 22 member 9
Database Link:	NP_543142 Entrez Gene 114571 Human Q8IVM8
Background:	The function of this protein remains unknown.
Synonyms:	FLJ23666; HOAT4; OAT4; OAT7; ust3; UST3H
Protein Families:	Transmembrane



[View online »](#)

Product images:



WB Suggested Anti-SLC22A9 Antibody
Titration: 1.0 ug/ml
Positive Control: Fetal Heart