

## Product datasheet for **TA358842**

### FKBP10 Rabbit Polyclonal Antibody

#### Product data:

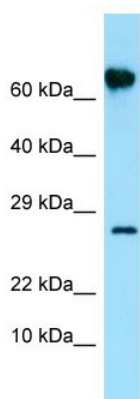
|                         |   |
|-------------------------|---|
| Product Type:           | Primary Antibodies  |
| Applications:           | WB  |
| Reactivity:             | Human   |
| Host:                   | Rabbit  |
| Clonality:              | Polyclonal  |
| Specificity:            | <b>Expected reactivity:</b> Cow, Dog, Guinea Pig, Horse, Human, Mouse, Rabbit, Rat, Yeast, Zebrafish<br><b>Homology:</b> Cow: 100%; Dog: 100%; Guinea Pig: 100%; Horse: 100%; Human: 100%; Mouse: 100%; Rabbit: 86%; Rat: 100%; Yeast: 93%; Zebrafish: 86%  |
| Formulation:            | Liquid. Purified antibody supplied in 1x PBS buffer with 0.09% (w/v) sodium azide and 2% sucrose.<br><i>Note that this product is shipped as lyophilized powder to China customers.</i>   |
| Concentration:          | lot specific  |
| Purification:           | Affinity Purified   |
| Conjugation:            | Unconjugated  |
| Storage:                | For short term use, store at 2-8°C up to 1 week. For long term storage, store at -20°C in small aliquots to prevent freeze-thaw cycles.   |
| Stability:              | Shelf life: one year from despatch.   |
| Predicted Protein Size: | 61kDa   |
| Gene Name:              | FK506 binding protein 10  |
| Database Link:          | <a href="#">NP_068758</a><br><a href="#">Entrez Gene 60681 Human</a><br><a href="#">Q96AY3</a>  |
| Background:             | The protein encoded by this gene belongs to the FKBP-type peptidyl-prolyl cis/trans isomerase (PPIase) family. This protein localizes to the endoplasmic reticulum and acts as a molecular chaperone. Alternatively spliced variants encoding different isoforms have been reported, but their biological validity has not been determined. |
| Synonyms:               | FKBP6; FKBP65; FLJ20683; FLJ22041; FLJ23833; hFKBP65; PPIASE; rotamase  |



[View online »](#)

Protein Families: Druggable Genome

### Product images:



WB Suggested Anti-FKBP10 Antibody  
Titration: 1.0 ug/ml  
Positive Control: Placenta