

Product datasheet for **TA358841**

alpha Lactalbumin (LALBA) Rabbit Polyclonal Antibody

Product data:

Product Type:	Primary Antibodies
Applications:	WB
Reactivity:	Human
Host:	Rabbit
Clonality:	Polyclonal
Specificity:	Expected reactivity: Cow, Dog, Goat, Guinea Pig, Horse, Human, Mouse, Rat, Sheep Homology: Cow: 93%; Dog: 86%; Goat: 93%; Guinea Pig: 92%; Horse: 79%; Human: 100%; Mouse: 85%; Rat: 85%; Sheep: 93%
Formulation:	Liquid. Purified antibody supplied in 1x PBS buffer with 0.09% (w/v) sodium azide and 2% sucrose. <i>Note that this product is shipped as lyophilized powder to China customers.</i>
Concentration:	lot specific
Purification:	Affinity Purified
Conjugation:	Unconjugated
Storage:	For short term use, store at 2-8°C up to 1 week. For long term storage, store at -20°C in small aliquots to prevent freeze-thaw cycles.
Stability:	Shelf life: one year from despatch.
Predicted Protein Size:	14kDa
Gene Name:	lactalbumin alpha
Database Link:	NP_002280 Entrez Gene 3906 Human P00709
Background:	This gene encodes alpha-lactalbumin, a principal protein of milk. Alpha-lactalbumin forms the regulatory subunit of the lactose synthase (LS) heterodimer and beta 1,4-galactosyltransferase (beta4Gal-T1) forms the catalytic component. Together, these proteins enable LS to produce lactose by transferring galactose moieties to glucose. As a monomer, alpha-lactalbumin strongly binds calcium and zinc ions and may possess bactericidal or antitumor activity. A folding variant of alpha-lactalbumin, called HAMLET, likely induces apoptosis in tumor and immature cells.



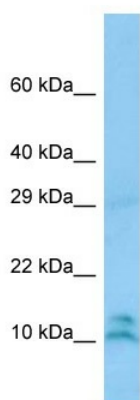
[View online »](#)

Synonyms: LYZL7; MGC138521; MGC138523

Protein Families: Secreted Protein

Protein Pathways: Galactose metabolism

Product images:



Host: Rabbit
Target Name: LALBA
Antibody Dilution: 1.0ug/ml
Sample Type: THP-1 cell lysate