

Product datasheet for **TA358840**

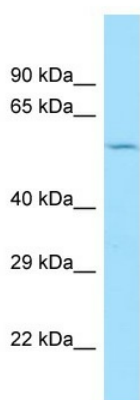
CCZ1 Rabbit Polyclonal Antibody

Product data:

Product Type:	Primary Antibodies
Applications:	WB
Reactivity:	Human
Host:	Rabbit
Clonality:	Polyclonal
Specificity:	Expected reactivity: Cow, Dog, Guinea Pig, Horse, Human, Mouse, Rabbit, Rat, Zebrafish Homology: Cow: 100%; Dog: 100%; Guinea Pig: 93%; Horse: 93%; Human: 100%; Mouse: 93%; Rabbit: 93%; Rat: 100%; Zebrafish: 79%
Formulation:	Liquid. Purified antibody supplied in 1x PBS buffer with 0.09% (w/v) sodium azide and 2% sucrose. <i>Note that this product is shipped as lyophilized powder to China customers.</i>
Concentration:	lot specific
Purification:	Affinity Purified
Conjugation:	Unconjugated
Storage:	For short term use, store at 2-8°C up to 1 week. For long term storage, store at -20°C in small aliquots to prevent freeze-thaw cycles.
Stability:	Shelf life: one year from despatch.
Predicted Protein Size:	56kDa
Gene Name:	CCZ1 homolog, vacuolar protein trafficking and biogenesis associated
Database Link:	NP_056437 Entrez Gene 51622 Human P86790
Background:	The function of this protein remains unknown.
Synonyms:	C7orf28A; CCZ1A; CGI-43; H_DJ1163J12.2



[View online »](#)

Product images:

WB Suggested Anti-CCZ1 Antibody

Titration: 1.0 ug/ml

Positive Control: 293T Whole CellCCZ1 is strongly supported by BioGPS gene expression data to be expressed in Human HEK293T cells