

Product datasheet for **TA358834**

Neuronal membrane glycoprotein M6 a (GPM6A) Rabbit Polyclonal Antibody

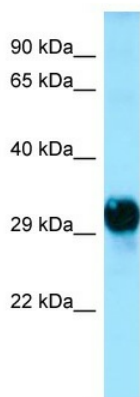
Product data:

Product Type:	Primary Antibodies
Applications:	IHC, WB
Reactivity:	Human, Rat
Host:	Rabbit
Clonality:	Polyclonal
Specificity:	Expected reactivity: Cow, Dog, Guinea Pig, Horse, Human, Mouse, Rabbit, Rat, Zebrafish Homology: Cow: 100%; Dog: 100%; Guinea Pig: 100%; Horse: 100%; Human: 100%; Mouse: 100%; Rabbit: 100%; Rat: 100%; Zebrafish: 100%
Formulation:	Liquid. Purified antibody supplied in 1x PBS buffer with 0.09% (w/v) sodium azide and 2% sucrose. <i>Note that this product is shipped as lyophilized powder to China customers.</i>
Concentration:	lot specific
Purification:	Affinity Purified
Conjugation:	Unconjugated
Storage:	For short term use, store at 2-8°C up to 1 week. For long term storage, store at -20°C in small aliquots to prevent freeze-thaw cycles.
Stability:	Shelf life: one year from despatch.
Predicted Protein Size:	31kDa
Gene Name:	glycoprotein M6A
Database Link:	NP_005268 Entrez Gene 306439 Rat Entrez Gene 2823 Human P51674
Background:	The function of this protein remains unknown.
Synonyms:	M6A; M6a; MGC38999
Protein Families:	Transmembrane

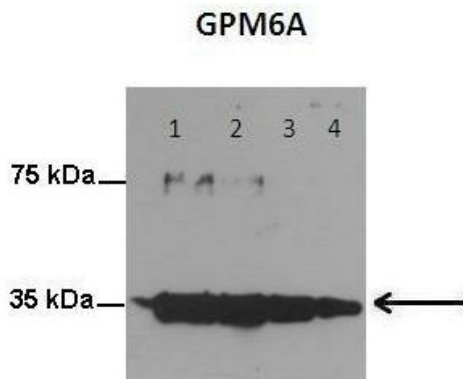


[View online »](#)

Product images:

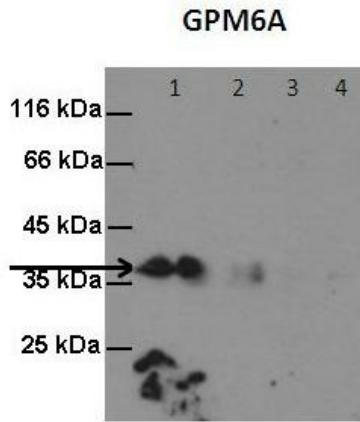


Host: Rabbit
 Target Name: GPM6A
 Antibody Dilution: 1.0ug/ml
 Sample Type: Human brain



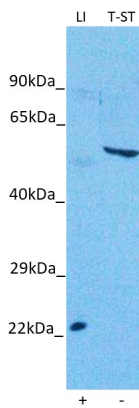
Lanes:
 Lane1: 250ug rat hippocampal culture neurons
 Lane2: 200ug rat hippocampal culture neurons
 Lane3: 100ug rat hippocampal culture neurons
 Lane4: 50ug rat hippocampal culture neurons
 Primary Antibody Dilution:
 1:1000
 Secondary Antibody:
 Anti-rabbit HRP
 Secondary Antibody Dilution:
 1:8000
 Gene Name:
 GPM6A
 Submitted by:
 Anonymous

See Immunoblot 2 Data and Customer Feedback for more information



See Immunoblot 3 Data and Customer Feedback for more information

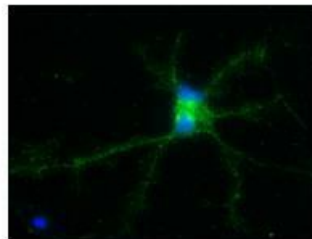
Lanes:
 Lane1: 400ug rat hippocampal
 Lane2: 300ug rat hippocampal
 Lane3: 200ug rat hippocampal
 Lane4: 100ug rat hippocampal
 Primary Antibody Dilution:
 1:1000
 Secondary Antibody:
 Anti-rabbit HRP
 Secondary Antibody Dilution:
 1:8000
 Gene Name:
 GPM6A
 Submitted by:
 Anonymous



Host: Rabbit
 Target name: GPM6A
 Positive control: ~25ug Human Liver (LI)
 Negative control: ~25ug Human Stomach Tumor (T-ST)
 Antibody concentration: 3ug/ml

Host: Rabbit
 Target: GPM6A
 Positive control (+): Human Liver (LI)
 Negative control (-): Human Stomach Tumor (T-ST)
 Antibody concentration: 3ug/ml

GPM6A

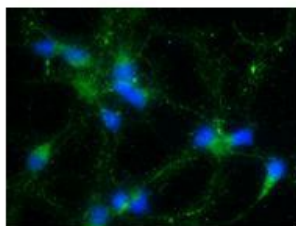


Green: GPM6A
 Blue: DAPI

See IHC 1 Data and Customer Feedback for more information

Primary Antibody Dilution:
 1:250
 Secondary Antibody:
 Anti-rabbit-AlexaFluor 488
 Secondary Antibody Dilution:
 1:1000
 Color/Signal Descriptions:
 GPM6A: Green DAPI: Blue
 Gene Name:
 GPM6A
 Submitted by:
 Anonymous

GPM6A



Green: GPM6A
Blue: DAPI

Primary Antibody Dilution:
1:250
Secondary Antibody:
Anti-rabbit-AlexaFluor 488
Secondary Antibody Dilution:
1:1000
Color/Signal Descriptions:
GPM6A: Green DAPI: Blue
Gene Name:
GPM6A
Submitted by:
Anonymous

See IHC 2 Data and Customer Feedback for more information