

Product datasheet for **TA358831**

Villin (VIL1) Rabbit Polyclonal Antibody

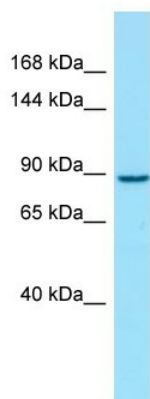
Product data:

Product Type:	Primary Antibodies
Applications:	WB
Reactivity:	Human, Mouse
Host:	Rabbit
Clonality:	Polyclonal
Specificity:	Expected reactivity: Cow, Dog, Guinea Pig, Horse, Human, Mouse, Rabbit, Rat, Zebrafish Homology: Cow: 93%; Dog: 93%; Guinea Pig: 93%; Horse: 100%; Human: 100%; Mouse: 100%; Rabbit: 93%; Rat: 93%; Zebrafish: 79%
Formulation:	Liquid. Purified antibody supplied in 1x PBS buffer with 0.09% (w/v) sodium azide and 2% sucrose. <i>Note that this product is shipped as lyophilized powder to China customers.</i>
Concentration:	lot specific
Purification:	Affinity Purified
Conjugation:	Unconjugated
Storage:	For short term use, store at 2-8°C up to 1 week. For long term storage, store at -20°C in small aliquots to prevent freeze-thaw cycles.
Stability:	Shelf life: one year from despatch.
Predicted Protein Size:	93kDa
Gene Name:	villin 1
Database Link:	NP_009058 Entrez Gene 22349 Mouse Entrez Gene 7429 Human P09327
Background:	This gene encodes a member of a family of calcium-regulated actin-binding proteins. This protein represents a dominant part of the brush border cytoskeleton which functions in the capping, severing, and bundling of actin filaments. Two mRNAs of 2.7 kb and 3.5 kb have been observed; they result from utilization of alternate poly-adenylation signals present in the terminal exon.
Synonyms:	D2S1471; VIL

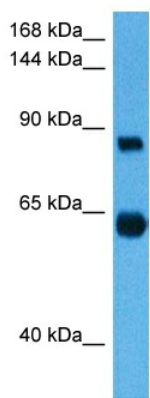


[View online »](#)

Product images:

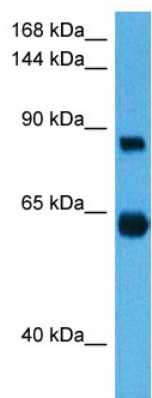


WB Suggested Anti-VIL1 Antibody
 Titration: 1.0 ug/ml
 Positive Control: Fetal Liver



Host: Rabbit
 Target Name: Vil1
 Sample Type: Mouse Kidney Lysate
 Antibody Dilution: 1.0µg/ml

Host: Rabbit
 Target Name: VIL1
 Sample Tissue: Mouse Kidney
 Antibody Dilution: 1ug/ml



Host: Rabbit
Target Name: Vil1
Sample Type: Mouse Kidney Lysate
Antibody Dilution: 1.0 μ g/ml

Host: Mouse
Target Name: VIL1
Sample Tissue: Mouse Kidney
Antibody Dilution: 1 μ g/ml