

Product datasheet for **TA358830**

TXNL1 Rabbit Polyclonal Antibody

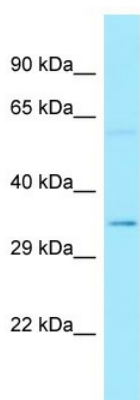
Product data:

Product Type:	Primary Antibodies
Applications:	WB
Reactivity:	Human
Host:	Rabbit
Clonality:	Polyclonal
Specificity:	Expected reactivity: Cow, Dog, Goat, Guinea Pig, Horse, Human, Mouse, Rabbit, Rat Homology: Cow: 100%; Dog: 100%; Goat: 100%; Guinea Pig: 100%; Horse: 100%; Human: 100%; Mouse: 100%; Rabbit: 100%; Rat: 100%
Formulation:	Liquid. Purified antibody supplied in 1x PBS buffer with 0.09% (w/v) sodium azide and 2% sucrose. <i>Note that this product is shipped as lyophilized powder to China customers.</i>
Concentration:	lot specific
Purification:	Affinity Purified
Conjugation:	Unconjugated
Storage:	For short term use, store at 2-8°C up to 1 week. For long term storage, store at -20°C in small aliquots to prevent freeze-thaw cycles.
Stability:	Shelf life: one year from despatch.
Predicted Protein Size:	32kDa
Gene Name:	thioredoxin like 1
Database Link:	NP_004777 Entrez Gene 9352 Human O43396
Background:	The function of this protein remains unknown.
Synonyms:	TRP32; TxI; TXL-1; TXNL
Protein Families:	Druggable Genome

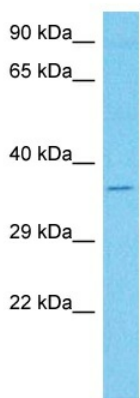


[View online »](#)

Product images:



WB Suggested Anti-TXNL1 Antibody
 Titration: 1.0 ug/ml
 Positive Control: Fetal Lung



Host: Rabbit
 Target Name: TXNL1
 Sample Type: HT1080 Cell Lysate
 Antibody Dilution: 1.0µg/ml

Host: Rabbit
 Target Name: TXNL1
 Sample Tissue: Human HT1080 Whole Cell
 Antibody Dilution: 1ug/ml