

Product datasheet for **TA358828**

Villin (VIL1) Rabbit Polyclonal Antibody

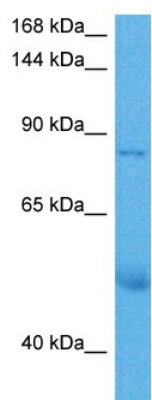
Product data:

Product Type:	Primary Antibodies
Applications:	WB
Reactivity:	Human
Host:	Rabbit
Clonality:	Polyclonal
Immunogen:	The immunogen is a synthetic peptide directed towards the middle region of human VIL1
Specificity:	Expected reactivity: Human Homology: Cow: 79%; Dog: 79%; Human: 100%; Pig: 79%
Formulation:	Liquid. Purified antibody supplied in 1x PBS buffer with 0.09% (w/v) sodium azide and 2% sucrose. <i>Note that this product is shipped as lyophilized powder to China customers.</i>
Concentration:	lot specific
Purification:	Affinity purified
Conjugation:	Unconjugated
Storage:	For short term use, store at 2-8°C up to 1 week. For long term storage, store at -20°C in small aliquots to prevent freeze-thaw cycles.
Stability:	Shelf life: one year from despatch.
Predicted Protein Size:	90 kDa
Gene Name:	villin 1
Database Link:	NP_009058.2 Entrez Gene 7429 Human P09327
Background:	This gene encodes a member of a family of calcium-regulated actin-binding proteins. This protein represents a dominant part of the brush border cytoskeleton which functions in the capping, severing, and bundling of actin filaments. Two mRNAs of 2.7 kb and 3.5 kb have been observed; they result from utilization of alternate poly-adenylation signals present in the terminal exon.
Synonyms:	D2S1471; VIL



[View online >](#)

Product images:



Host: Rabbit
Target Name: VIL1
Sample Type: Leiomyosarcoma Tumor Lysate
Antibody Dilution: 1.0 μ g/ml

Host: Rabbit
Target Name: VIL1
Sample Tissue: Human Leiomyosarcoma Tumor lysates
Antibody Dilution: 1 μ g/ml