

Product datasheet for **TA358821**

GNA11 Rabbit Polyclonal Antibody

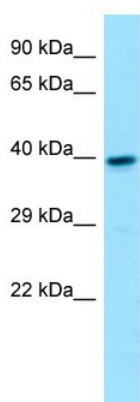
Product data:

Product Type:	Primary Antibodies
Applications:	WB
Reactivity:	Human, Mouse
Host:	Rabbit
Clonality:	Polyclonal
Specificity:	Expected reactivity: Cow, Dog, Guinea Pig, Horse, Human, Mouse, Rabbit, Rat, Zebrafish Homology: Cow: 100%; Dog: 100%; Guinea Pig: 100%; Horse: 100%; Human: 100%; Mouse: 100%; Rabbit: 86%; Rat: 100%; Zebrafish: 86%
Formulation:	Liquid. Purified antibody supplied in 1x PBS buffer with 0.09% (w/v) sodium azide and 2% sucrose. <i>Note that this product is shipped as lyophilized powder to China customers.</i>
Concentration:	lot specific
Purification:	Affinity Purified
Conjugation:	Unconjugated
Storage:	For short term use, store at 2-8°C up to 1 week. For long term storage, store at -20°C in small aliquots to prevent freeze-thaw cycles.
Stability:	Shelf life: one year from despatch.
Predicted Protein Size:	41kDa
Gene Name:	G protein subunit alpha 11
Database Link:	NP_002058 Entrez Gene 14672 Mouse Entrez Gene 2767 Human P43444
Background:	Guanine nucleotide-binding proteins (G proteins) are involved as modulators or transducers in various transmembrane signaling systems. Acts as an activator of phospholipase C.
Synonyms:	GA11; GNA-11
Protein Pathways:	Calcium signaling pathway, Gap junction, GnRH signaling pathway, Long-term depression, Vascular smooth muscle contraction

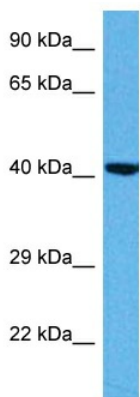


[View online »](#)

Product images:



WB Suggested Anti-GNA11 Antibody
Titration: 1.0 ug/ml
Positive Control: Fetal Heart



Host: Rabbit
Target Name: Gna11
Sample Type: Mouse Brain Lysate
Antibody Dilution: 1.0µg/ml

Host: Mouse
Target Name: GNA11
Sample Tissue: Mouse Brain
Antibody Dilution: 1 ug/ml