

Product datasheet for **TA358811**

RGP1 Rabbit Polyclonal Antibody

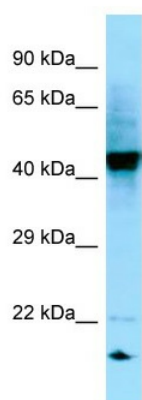
Product data:

Product Type:	Primary Antibodies
Applications:	WB
Reactivity:	Human
Host:	Rabbit
Clonality:	Polyclonal
Specificity:	Expected reactivity: Cow, Dog, Guinea Pig, Horse, Human, Mouse, Pig, Rabbit, Rat Homology: Cow: 100%; Dog: 100%; Guinea Pig: 93%; Horse: 100%; Human: 100%; Mouse: 100%; Pig: 100%; Rabbit: 100%; Rat: 100%
Formulation:	Liquid. Purified antibody supplied in 1x PBS buffer with 0.09% (w/v) sodium azide and 2% sucrose. <i>Note that this product is shipped as lyophilized powder to China customers.</i>
Concentration:	lot specific
Purification:	Affinity Purified
Conjugation:	Unconjugated
Storage:	For short term use, store at 2-8°C up to 1 week. For long term storage, store at -20°C in small aliquots to prevent freeze-thaw cycles.
Stability:	Shelf life: one year from despatch.
Predicted Protein Size:	42kDa
Gene Name:	RGP1 homolog, RAB6A GEF complex partner 1
Database Link:	NP_001073965 Entrez Gene 9827 Human Q92546
Background:	The function of this protein remains known.
Synonyms:	KIAA0258; RGPD1



[View online »](#)

Product images:



WB Suggested Anti-RGP1 Antibody
Titration: 1.0 ug/ml
Positive Control: 721_B Whole Cell
RGP1 is supported by BioGPS gene expression data to be expressed in 721_B