

## Product datasheet for **TA358806**

### LTV1 Rabbit Polyclonal Antibody

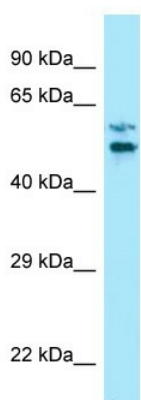
#### Product data:

Product Type:	Primary Antibodies
Applications:	WB
Reactivity:	Human
Host:	Rabbit
Clonality:	Polyclonal
Specificity:	<b>Expected reactivity:</b> Cow, Dog, Guinea Pig, Horse, Human, Mouse, Rabbit, Rat <b>Homology:</b> Cow: 92%; Dog: 93%; Guinea Pig: 86%; Horse: 100%; Human: 100%; Mouse: 86%; Rabbit: 93%; Rat: 93%
Formulation:	Liquid. Purified antibody supplied in 1x PBS buffer with 0.09% (w/v) sodium azide and 2% sucrose. <i>Note that this product is shipped as lyophilized powder to China customers.</i>
Concentration:	lot specific
Purification:	Affinity Purified
Conjugation:	Unconjugated
Storage:	For short term use, store at 2-8°C up to 1 week. For long term storage, store at -20°C in small aliquots to prevent freeze-thaw cycles.
Stability:	Shelf life: one year from despatch.
Predicted Protein Size:	55kDa
Gene Name:	LTV1 ribosome biogenesis factor
Database Link:	<a href="#">NP_116249</a> <a href="#">Entrez Gene 84946 Human</a> <a href="#">Q96GA3</a>
Background:	The function of this protein remains known.
Synonyms:	C6orf93; dJ468K18.4; FLJ14909; FLJ18519



[View online »](#)

Product images:



WB Suggested Anti-LTV1 Antibody  
Titration: 1.0 ug/ml  
Positive Control: Placenta