

## Product datasheet for **TA358805**

### LAP1 (LRRC7) Rabbit Polyclonal Antibody

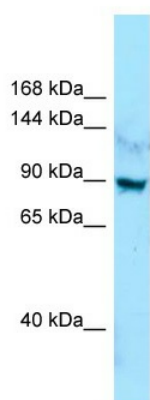
#### Product data:

Product Type:	Primary Antibodies
Applications:	WB
Reactivity:	Human
Host:	Rabbit
Clonality:	Polyclonal
Specificity:	<b>Expected reactivity:</b> Cow, Dog, Guinea Pig, Horse, Human, Mouse, Pig, Rabbit, Rat <b>Homology:</b> Cow: 93%; Dog: 93%; Guinea Pig: 86%; Horse: 93%; Human: 100%; Mouse: 86%; Pig: 93%; Rabbit: 93%; Rat: 93%
Formulation:	Liquid. Purified antibody supplied in 1x PBS buffer with 0.09% (w/v) sodium azide and 2% sucrose.
Concentration:	lot specific
Purification:	Affinity Purified
Conjugation:	Unconjugated
Storage:	For short term use, store at 2-8°C up to 1 week. For long term storage, store at -20°C in small aliquots to prevent freeze-thaw cycles.
Stability:	Shelf life: one year from despatch.
Predicted Protein Size:	91kDa
Gene Name:	leucine rich repeat containing 7
Database Link:	<a href="#">NP_065845</a> <a href="#">Entrez Gene 57554 Human</a> <a href="#">Q96NW7</a>
Background:	The function of this protein remains known.
Synonyms:	Densin-180; DKFZp686I1147; KIAA1365; LAP1; MGC144918



[View online »](#)

**Product images:**



WB Suggested Anti-LRRC7 Antibody  
Titration: 1.0 ug/ml  
Positive Control: Jurkat Whole Cell