

## Product datasheet for **TA358803**

### TICAM2 (TMED7-TICAM2) Rabbit Polyclonal Antibody

#### Product data:

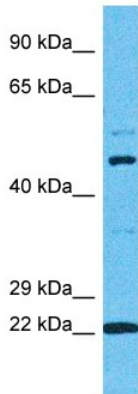
Product Type:	Primary Antibodies
Applications:	WB
Reactivity:	Human
Host:	Rabbit
Clonality:	Polyclonal
Immunogen:	The immunogen is a synthetic peptide directed towards the N-terminal region of Human TICAM2
Specificity:	<b>Expected reactivity:</b> Human <b>Homology:</b> Human: 100%
Formulation:	Liquid. Purified antibody supplied in 1x PBS buffer with 0.09% (w/v) sodium azide and 2% sucrose. <i>Note that this product is shipped as lyophilized powder to China customers.</i>
Concentration:	lot specific
Purification:	Affinity purified
Conjugation:	Unconjugated
Storage:	For short term use, store at 2-8°C up to 1 week. For long term storage, store at -20°C in small aliquots to prevent freeze-thaw cycles.
Stability:	Shelf life: one year from despatch.
Predicted Protein Size:	25kDa
Gene Name:	TMED7-TICAM2 readthrough
Database Link:	<a href="#">NP_067681</a> <a href="#">Entrez Gene 100302736 Human</a> <a href="#">Q86XR7</a>



[View online »](#)

**Background:**

This locus represents naturally occurring read-through transcription between the neighboring transmembrane emp24 protein transport domain containing 7 (TMED7) and toll-like receptor adaptor molecule 2 (TICAM2) genes. Alternative splicing results in multiple transcript variants, one of which encodes a fusion protein that shares sequence identity with the products of each individual gene. This fusion product functions to negatively regulate the adaptor MyD88-independent toll-like receptor 4 pathway.

**Product images:**

Host: Rabbit  
Target Name: TCAM2  
Sample Tissue: Fetal Lung Lysate  
Antibody Dilution: 1.0µg/ml

Host: Rabbit  
Target Name: TCAM2  
Sample Type: Fetal Lung lysates  
Antibody Dilution: 1.0ug/ml