

Product datasheet for **TA358800**

GPR100 (RXFP4) Rabbit Polyclonal Antibody

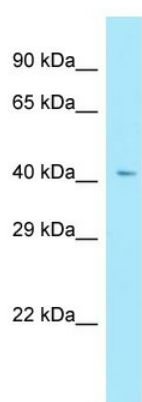
Product data:

Product Type:	Primary Antibodies
Applications:	WB
Reactivity:	Human
Host:	Rabbit
Clonality:	Polyclonal
Specificity:	Expected reactivity: Human, Pig Homology: Human: 100%; Pig: 93%
Formulation:	Liquid. Purified antibody supplied in 1x PBS buffer with 0.09% (w/v) sodium azide and 2% sucrose. <i>Note that this product is shipped as lyophilized powder to China customers.</i>
Concentration:	lot specific
Purification:	Affinity Purified
Conjugation:	Unconjugated
Storage:	For short term use, store at 2-8°C up to 1 week. For long term storage, store at -20°C in small aliquots to prevent freeze-thaw cycles.
Stability:	Shelf life: one year from despatch.
Predicted Protein Size:	41kDa
Gene Name:	relaxin/insulin like family peptide receptor 4
Database Link:	NP_871001 Entrez Gene 339403 Human Q8TDU9
Background:	GPR100 is a member of the rhodopsin family of G protein-coupled receptors (GPRs).
Synonyms:	GPCR142; GPR100; MGC126556; MGC126558; RLN3R2; RXFP4
Protein Families:	Druggable Genome, Transmembrane



[View online »](#)

Product images:



WB Suggested Anti-RXFP4 Antibody
Titration: 1.0 ug/ml
Positive Control: Fetal Lung