

Product datasheet for **TA358798**

EIF3S2 (EIF3I) Rabbit Polyclonal Antibody

Product data:

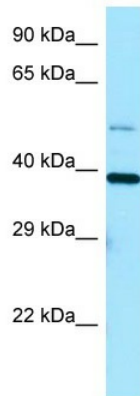
Product Type:	Primary Antibodies
Applications:	IHC, IP, WB
Reactivity:	Human, Mouse, Rat
Host:	Rabbit
Clonality:	Polyclonal
Specificity:	Expected reactivity: Cow, Dog, Guinea Pig, Horse, Human, Mouse, Rabbit, Rat Homology: Cow: 100%; Dog: 100%; Guinea Pig: 100%; Horse: 100%; Human: 100%; Mouse: 100%; Rabbit: 100%; Rat: 100%
Formulation:	Liquid. Purified antibody supplied in 1x PBS buffer with 0.09% (w/v) sodium azide and 2% sucrose.
Concentration:	lot specific
Purification:	Affinity Purified
Conjugation:	Unconjugated
Storage:	For short term use, store at 2-8°C up to 1 week. For long term storage, store at -20°C in small aliquots to prevent freeze-thaw cycles.
Stability:	Shelf life: one year from despatch.
Predicted Protein Size:	36kDa
Gene Name:	eukaryotic translation initiation factor 3 subunit I
Database Link:	NP_003748 Entrez Gene 8668 Human Q13347
Background:	EIF3I is a component of the eukaryotic translation initiation factor 3 (eIF-3) complex, which is required for several steps in the initiation of protein synthesis. The eIF-3 complex associates with the 40S ribosome and facilitates the recruitment of eIF-1, eIF-1A, eIF-2:GTP:methionyl-tRNA _i and eIF-5 to form the 43S preinitiation complex (43S PIC). The eIF-3 complex stimulates mRNA recruitment to the 43S PIC and scanning of the mRNA for AUG recognition. The eIF-3 complex is also required for disassembly and recycling of posttermination ribosomal complexes and subsequently prevents premature joining of the 40S and 60S ribosomal subunits prior to initiation.



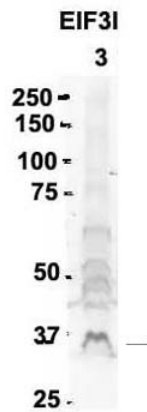
[View online »](#)

Synonyms: eIF-3-beta; eIF3-beta; eIF3-p36; EIF3S2; PRO2242; TRIP-1; TRIP1

Product images:

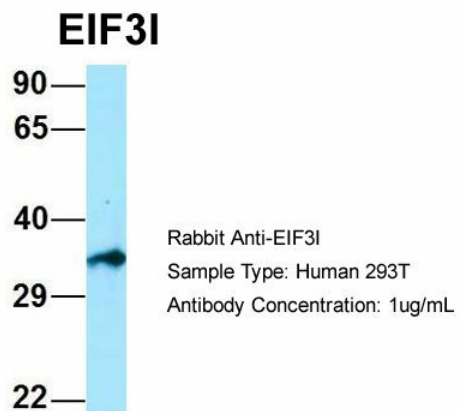


EIF3I antibody - C-terminal region (TA358798) validated by WB using HepG2 cell lysate at 1.0ug/ml.

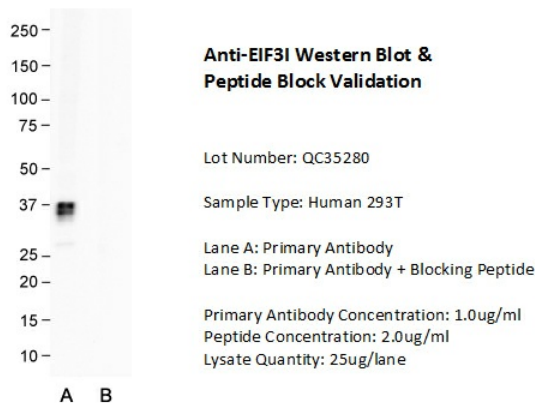


Sample Type: 3. rat brain extract (80ug)
 Primary antibody dilution: 2ug/ml
 Secondary antibody: IRDye 800CW goat anti-rabbit from Li-COR Bioscience
 Secondary antibody dilution: 1: 20,000
 Image Submitted by: Yuzhi Chen University of Arkansas for Medical Science

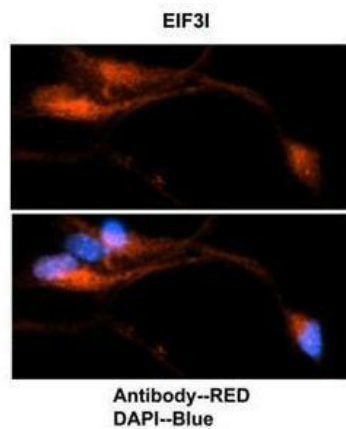
See Immunoblot 2 Data for more information.



Host: Rabbit
Target Name: EIF3I
Sample Type: Human 293T
Antibody Dilution: 1.0ug/ml



Host: Rabbit
Target Name: EIF3I
Sample Type: Human 293T
Lane A: Primary Antibody
Lane B: Primary Antibody + Blocking Peptide
Primary Antibody Concentration: 1.0 ug/ml
Peptide Concentration: 2.0 ug/ml
Lysate Quantity: 25 ug/lane



Sample Type:
Mouse brain stem cells
Primary Antibody Dilution:
1:500
Secondary Antibody:
Goat anti-rabbit Alexa-Fluor 594
Secondary Antibody Dilution:
1:1000
Color/Signal Descriptions:
EIF3I: Red DAPI:Blue
Gene Name:
EIF3I
Submitted by:
Dr. Yuzhi Chen, University of Arkansas for Medical
Science

See IHC 1 Data and Customer Feedback for more information