

Product datasheet for **TA358796**

EIF3S2 (EIF3I) Rabbit Polyclonal Antibody

Product data:

Product Type:	Primary Antibodies
Applications:	WB
Reactivity:	Human
Host:	Rabbit
Clonality:	Polyclonal
Specificity:	Expected reactivity: Cow, Dog, Guinea Pig, Horse, Human, Mouse, Rabbit, Rat Homology: Cow: 86%; Dog: 100%; Guinea Pig: 93%; Horse: 100%; Human: 100%; Mouse: 93%; Rabbit: 100%; Rat: 93%
Formulation:	Liquid. Purified antibody supplied in 1x PBS buffer with 0.09% (w/v) sodium azide and 2% sucrose. <i>Note that this product is shipped as lyophilized powder to China customers.</i>
Concentration:	lot specific
Purification:	Affinity Purified
Conjugation:	Unconjugated
Storage:	For short term use, store at 2-8°C up to 1 week. For long term storage, store at -20°C in small aliquots to prevent freeze-thaw cycles.
Stability:	Shelf life: one year from despatch.
Predicted Protein Size:	36kDa
Gene Name:	eukaryotic translation initiation factor 3 subunit I
Database Link:	NP_003748 Entrez Gene 8668 Human Q13347



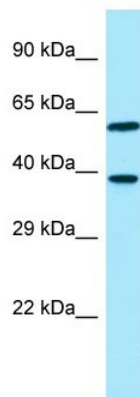
[View online »](#)

Background:

EIF3I is a component of the eukaryotic translation initiation factor 3 (eIF-3) complex, which is required for several steps in the initiation of protein synthesis. The eIF-3 complex associates with the 40S ribosome and facilitates the recruitment of eIF-1, eIF-1A, eIF-2:GTP:methionyl-tRNAⁱ and eIF-5 to form the 43S preinitiation complex (43S PIC). The eIF-3 complex stimulates mRNA recruitment to the 43S PIC and scanning of the mRNA for AUG recognition. The eIF-3 complex is also required for disassembly and recycling of posttermination ribosomal complexes and subsequently prevents premature joining of the 40S and 60S ribosomal subunits prior to initiation.

Synonyms:

eIF-3-beta; eIF3-beta; eIF3-p36; EIF3S2; PRO2242; TRIP-1; TRIP1

Product images:


WB Suggested Anti-EIF3I Antibody
 Titration: 1.0 ug/ml
 Positive Control: HeLa Whole Cell EIF3I is supported by BioGPS gene expression data to be expressed in HeLa


Anti-EIF3I Western Blot & Peptide Block Validation

Lot Number: QC64825

Sample Type: Human HeLa

Lane A: Primary Antibody
 Lane B: Primary Antibody + Blocking Peptide

Primary Antibody Concentration: 1.0ug/ml
 Peptide Concentration: 2.0ug/ml
 Lysate Quantity: 25ug/lane

Host: Rabbit
 Target Name: EIF3I
 Sample Type: Human HeLa
 Lane A: Primary Antibody
 Lane B: Primary Antibody + Blocking Peptide
 Primary Antibody Concentration: 1.0 ug/ml
 Peptide Concentration: 2.0 ug/ml
 Lysate Quantity: 25 ug/lane