

Product datasheet for **TA358794**

AIM (CD5L) Rabbit Polyclonal Antibody

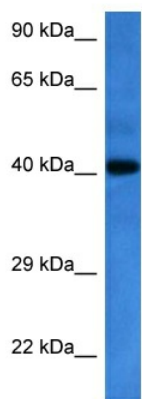
Product data:

Product Type:	Primary Antibodies
Applications:	WB
Reactivity:	Human
Host:	Rabbit
Clonality:	Polyclonal
Immunogen:	The immunogen is a synthetic peptide directed towards the N terminal region of human CD5L
Specificity:	Expected reactivity: Human Homology: Human: 100%
Formulation:	Liquid. Purified antibody supplied in 1x PBS buffer with 0.09% (w/v) sodium azide and 2% sucrose. <i>Note that this product is shipped as lyophilized powder to China customers.</i>
Concentration:	lot specific
Purification:	Affinity purified
Conjugation:	Unconjugated
Storage:	For short term use, store at 2-8°C up to 1 week. For long term storage, store at -20°C in small aliquots to prevent freeze-thaw cycles.
Stability:	Shelf life: one year from despatch.
Predicted Protein Size:	38 kDa
Gene Name:	CD5 molecule like
Database Link:	NP_005885 Entrez Gene 922 Human O43866
Synonyms:	AIM; API6; CT-2; PRO229; SP-ALPHA; Spalpha
Protein Families:	Druggable Genome, Secreted Protein



[View online »](#)

Product images:



Host: Rabbit
Target Name: CD5L
Sample Type: Esophagus Tumor Lysate
Antibody Dilution: 1.0 μ g/ml

Host: Rabbit
Target Name: CD5L
Sample Tissue: Human Esophagus Tumor lysates
Antibody Dilution: 1 μ g/ml