

Product datasheet for **TA358793**

C18orf22 (RBFA) Rabbit Polyclonal Antibody

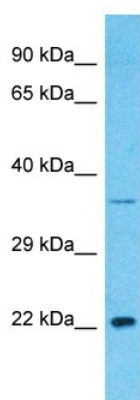
Product data:

Product Type:	Primary Antibodies
Applications:	WB
Reactivity:	Human
Host:	Rabbit
Clonality:	Polyclonal
Immunogen:	The immunogen is a synthetic peptide directed towards the N-terminal region of Human RBFA
Specificity:	Expected reactivity: Human
Formulation:	Liquid. Purified antibody supplied in 1x PBS buffer with 0.09% (w/v) sodium azide and 2% sucrose.
Concentration:	lot specific
Purification:	Affinity Purified
Conjugation:	Unconjugated
Storage:	For short term use, store at 2-8°C up to 1 week. For long term storage, store at -20°C in small aliquots to prevent freeze-thaw cycles.
Stability:	Shelf life: one year from despatch.
Predicted Protein Size:	37kDa
Gene Name:	ribosome binding factor A (putative)
Database Link:	NP_079081 Entrez Gene 79863 Human Q8N0V3
Background:	The function of this protein remains unknown.
Synonyms:	C18orf22; HsT169



[View online »](#)

Product images:



Host: Rabbit
Target Name: RBFA
Sample Tissue: THP-1 Cell Lysate
Antibody Dilution: 1.0µg/ml

Host: Rabbit
Target Name: RBFA
Sample Type: THP-1 Whole Cell lysates
Antibody Dilution: 1.0ug/ml