

## Product datasheet for **TA358787**

### MMP28 Rabbit Polyclonal Antibody

#### Product data:

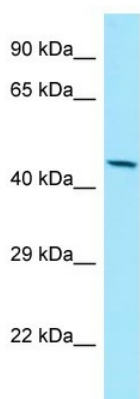
Product Type:	Primary Antibodies
Applications:	WB
Reactivity:	Human
Host:	Rabbit
Clonality:	Polyclonal
Specificity:	<b>Expected reactivity:</b> Cow, Dog, Horse, Human <b>Homology:</b> Cow: 91%; Dog: 92%; Horse: 100%; Human: 100%
Formulation:	Liquid. Purified antibody supplied in 1x PBS buffer with 0.09% (w/v) sodium azide and 2% sucrose. <i>Note that this product is shipped as lyophilized powder to China customers.</i>
Concentration:	lot specific
Purification:	Affinity Purified
Conjugation:	Unconjugated
Storage:	For short term use, store at 2-8°C up to 1 week. For long term storage, store at -20°C in small aliquots to prevent freeze-thaw cycles.
Stability:	Shelf life: one year from despatch.
Predicted Protein Size:	45kDa
Gene Name:	matrix metalloproteinase 28
Database Link:	<a href="#">NP_077278</a> <a href="#">Entrez Gene 79148 Human</a> <a href="#">Q9H239</a>
Background:	Proteins of the matrix metalloproteinase (MMP) family are involved in the breakdown of extracellular matrix for both normal physiological processes, such as embryonic development, reproduction and tissue remodeling, and disease processes, such as asthma and metastasis. This gene encodes a secreted enzyme that degrades casein. Its expression pattern suggests that it plays a role in tissue homeostasis and in wound repair. Transcript variants encoding different isoforms have been described.
Synonyms:	EPILYSIN; MM28; MMP-25; MMP-28; MMP25



[View online »](#)

Protein Families: Druggable Genome, Protease, Secreted Protein

## Product images:



WB Suggested Anti-MMP28 Antibody  
Titration: 1.0 ug/ml  
Positive Control: HepG2 Whole Cell