

## Product datasheet for **TA358784**

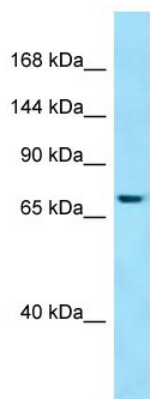
### SBF1 Rabbit Polyclonal Antibody

#### Product data:

Product Type:	Primary Antibodies
Applications:	WB
Reactivity:	Human
Host:	Rabbit
Clonality:	Polyclonal
Specificity:	<b>Expected reactivity:</b> Cow, Dog, Guinea Pig, Horse, Human, Mouse, Pig, Rat <b>Homology:</b> Cow: 93%; Dog: 79%; Guinea Pig: 79%; Horse: 79%; Human: 100%; Mouse: 86%; Pig: 86%; Rat: 86%
Formulation:	Liquid. Purified antibody supplied in 1x PBS buffer with 0.09% (w/v) sodium azide and 2% sucrose.
Concentration:	lot specific
Purification:	Affinity Purified
Conjugation:	Unconjugated
Storage:	For short term use, store at 2-8°C up to 1 week. For long term storage, store at -20°C in small aliquots to prevent freeze-thaw cycles.
Stability:	Shelf life: one year from despatch.
Predicted Protein Size:	91kDa
Gene Name:	SET binding factor 1
Database Link:	<a href="#">NP_002963</a> <a href="#">Entrez Gene 6305 Human</a> <a href="#">O95248</a>
Background:	The function of this protein remains known.
Synonyms:	DKFZp761D0422; MGC99700; MTMR5
Protein Families:	Druggable Genome, Phosphatase



[View online »](#)

**Product images:**

WB Suggested Anti-SBF1 Antibody

Titration: 1.0 ug/ml

Positive Control: 293T Whole Cells SBF1 is strongly supported by BioGPS gene expression data to be expressed in Human HEK293T cells