

Product datasheet for **TA358782**

IL26 Rabbit Polyclonal Antibody

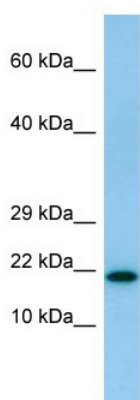
Product data:

Product Type:	Primary Antibodies
Applications:	WB
Reactivity:	Human
Host:	Rabbit
Clonality:	Polyclonal
Specificity:	Expected reactivity: Dog, Human Homology: Dog: 100%; Human: 100%
Formulation:	Liquid. Purified antibody supplied in 1x PBS buffer with 0.09% (w/v) sodium azide and 2% sucrose. <i>Note that this product is shipped as lyophilized powder to China customers.</i>
Concentration:	lot specific
Purification:	Affinity Purified
Conjugation:	Unconjugated
Storage:	For short term use, store at 2-8°C up to 1 week. For long term storage, store at -20°C in small aliquots to prevent freeze-thaw cycles.
Stability:	Shelf life: one year from despatch.
Predicted Protein Size:	18kDa
Gene Name:	interleukin 26
Database Link:	NP_060872 Entrez Gene 55801 Human Q9NPH9
Background:	This gene was identified by its overexpression specifically in herpesvirus samimiri-transformed T cells. The encoded protein is a member of the IL10 family of cytokines. It is a secreted protein and may function as a homodimer. This protein is thought to contribute to the transformed phenotype of T cells after infection by herpesvirus samimiri.
Synonyms:	AK155; IL-26
Protein Families:	Druggable Genome, Secreted Protein
Protein Pathways:	Cytokine-cytokine receptor interaction, Jak-STAT signaling pathway

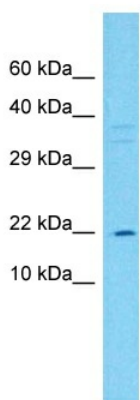


[View online »](#)

Product images:



WB Suggested Anti-IL26 Antibody
Titration: 1.0 ug/ml
Positive Control: Hela Whole Cell



Host: Rabbit
Target Name: IL26
Sample Type: HCT116 Cell Lysate
Antibody Dilution: 1.0ug/ml

Host: Rabbit
Target Name: IL26
Sample Tissue: Human HCT116 Whole Cell
Antibody Dilution: 1 ug/ml