

Product datasheet for **TA358781**

EBNA1 binding protein 2 (EBNA1BP2) Rabbit Polyclonal Antibody

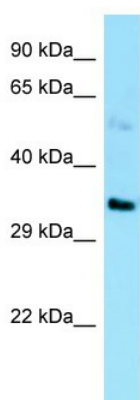
Product data:

Product Type:	Primary Antibodies
Applications:	WB
Reactivity:	Human
Host:	Rabbit
Clonality:	Polyclonal
Specificity:	Expected reactivity: Cow, Dog, Guinea Pig, Horse, Human, Mouse, Pig, Rabbit, Rat Homology: Cow: 100%; Dog: 100%; Guinea Pig: 86%; Horse: 100%; Human: 100%; Mouse: 79%; Pig: 100%; Rabbit: 100%; Rat: 100%
Formulation:	Liquid. Purified antibody supplied in 1x PBS buffer with 0.09% (w/v) sodium azide and 2% sucrose. <i>Note that this product is shipped as lyophilized powder to China customers.</i>
Concentration:	lot specific
Purification:	Affinity Purified
Conjugation:	Unconjugated
Storage:	For short term use, store at 2-8°C up to 1 week. For long term storage, store at -20°C in small aliquots to prevent freeze-thaw cycles.
Stability:	Shelf life: one year from despatch.
Predicted Protein Size:	35kDa
Gene Name:	EBNA1 binding protein 2
Database Link:	NP_006815 Entrez Gene 10969 Human Q99848
Background:	EBNA1BP2 is required for the processing of the 27S pre-rRNA.
Synonyms:	EBP2; NOBP; P40



[View online »](#)

Product images:



WB Suggested Anti-EBNA1BP2 Antibody
Titration: 1.0 ug/ml
Positive Control: HepG2 Whole Cell