

Product datasheet for **TA358780**

GPR65 Rabbit Polyclonal Antibody

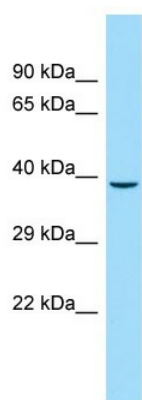
Product data:

Product Type:	Primary Antibodies
Applications:	WB
Reactivity:	Human
Host:	Rabbit
Clonality:	Polyclonal
Specificity:	Expected reactivity: Human Homology: Dog: 77%; Horse: 77%; Human: 100%; Mouse: 79%; Pig: 77%; Rabbit: 79%; Rat: 79%
Formulation:	Liquid. Purified antibody supplied in 1x PBS buffer with 0.09% (w/v) sodium azide and 2% sucrose. <i>Note that this product is shipped as lyophilized powder to China customers.</i>
Concentration:	lot specific
Purification:	Affinity Purified
Conjugation:	Unconjugated
Storage:	For short term use, store at 2-8°C up to 1 week. For long term storage, store at -20°C in small aliquots to prevent freeze-thaw cycles.
Stability:	Shelf life: one year from despatch.
Predicted Protein Size:	39kDa
Gene Name:	G protein-coupled receptor 65
Database Link:	NP_003599 Entrez Gene 8477 Human Q8IYL9
Background:	GPR65 is a receptor for the glycosphingolipid psychosine (PSY) and several related glycosphingolipids. GPR65 may have a role in activation-induced cell death or differentiation of T-cells.
Synonyms:	Dig1; Gpcr25; TDAG8; Tdag8
Protein Families:	Druggable Genome, GPCR, Transmembrane



[View online »](#)

Product images:



WB Suggested Anti-GPR65 Antibody
Titration: 1.0 ug/ml
Positive Control: U937 Whole Cell