

## Product datasheet for **TA358779**

### BPY2 Rabbit Polyclonal Antibody

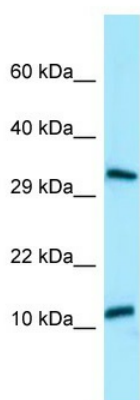
#### Product data:

Product Type:	Primary Antibodies
Applications:	WB
Reactivity:	Human
Host:	Rabbit
Clonality:	Polyclonal
Specificity:	<b>Expected reactivity:</b> Human <b>Homology:</b> Human: 100%
Formulation:	Liquid. Purified antibody supplied in 1x PBS buffer with 0.09% (w/v) sodium azide and 2% sucrose. <i>Note that this product is shipped as lyophilized powder to China customers.</i>
Concentration:	lot specific
Purification:	Affinity Purified
Conjugation:	Unconjugated
Storage:	For short term use, store at 2-8°C up to 1 week. For long term storage, store at -20°C in small aliquots to prevent freeze-thaw cycles.
Stability:	Shelf life: one year from despatch.
Predicted Protein Size:	12kDa
Gene Name:	basic charge, Y-linked, 2
Database Link:	<a href="#">NP_004669</a> <a href="#">Entrez Gene 9083 Human</a> <a href="#">O14599</a>
Background:	This gene is located in the nonrecombining portion of the Y chromosome, and expressed specifically in testis. The encoded protein interacts with ubiquitin protein ligase E3A and may be involved in male germ cell development and male infertility. Three nearly identical copies of this gene exist on chromosome Y; two copies are part of a palindromic region. This record represents the copy outside of the palidromic region.
Synonyms:	BPY2A; VCY2; VCY2A; VCY2B; VCY2C



[View online »](#)

Product images:



WB Suggested Anti-BPY2 Antibody  
Titration: 1.0 ug/ml  
Positive Control: HepG2 Whole Cell