

Product datasheet for **TA358774**

Hemoglobin subunit gamma 2 (HBG2) Rabbit Polyclonal Antibody

Product data:

Product Type:	Primary Antibodies
Applications:	WB
Reactivity:	Human
Host:	Rabbit
Clonality:	Polyclonal
Specificity:	Expected reactivity: Cow, Dog, Goat, Guinea Pig, Horse, Human, Mouse, Pig, Rabbit, Rat, Sheep Homology: Cow: 100%; Dog: 77%; Goat: 100%; Guinea Pig: 77%; Horse: 77%; Human: 100%; Mouse: 83%; Pig: 93%; Rabbit: 75%; Rat: 83%; Sheep: 100%
Formulation:	Liquid. Purified antibody supplied in 1x PBS buffer with 0.09% (w/v) sodium azide and 2% sucrose. <i>Note that this product is shipped as lyophilized powder to China customers.</i>
Concentration:	lot specific
Purification:	Affinity Purified
Conjugation:	Unconjugated
Storage:	For short term use, store at 2-8°C up to 1 week. For long term storage, store at -20°C in small aliquots to prevent freeze-thaw cycles.
Stability:	Shelf life: one year from despatch.
Predicted Protein Size:	16kDa
Gene Name:	hemoglobin subunit gamma 2
Database Link:	NP_000175 Entrez Gene 3048 Human P69892



[View online »](#)

Background:

The gamma globin genes (HBG1 and HBG2) are normally expressed in the fetal liver, spleen and bone marrow. Two gamma chains together with two alpha chains constitute fetal hemoglobin (HbF) which is normally replaced by adult hemoglobin (HbA) at birth. In some beta-thalassemias and related conditions, gamma chain production continues into adulthood. The two types of gamma chains differ at residue 136 where glycine is found in the G-gamma product (HBG2) and alanine is found in the A-gamma product (HBG1). The former is predominant at birth. The order of the genes in the beta-globin cluster is: 5'- epsilon -- gamma-G -- gamma-A -- delta -- beta--3'.

Synonyms:

FLJ76540; Gamma-2-globin; methemoglobin; OTTHUMP00000069638

Product images:

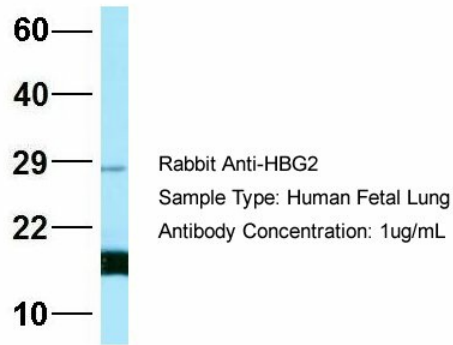

WB Suggested Anti-HBG2 Antibody
Titration: 1.0 ug/ml
Positive Control: Fetal Kidney

HBG2


Rabbit Anti-HBG2
Sample Type: Human Fetal Liver
Antibody Concentration: 1ug/mL

Host: Rabbit
Target Name: FAM46C
Sample Type: Human Fetal Liver
Antibody Dilution: 1.0ug/ml

HBG2



Host: Rabbit
Target Name: NSUN6
Sample Type: Human Fetal Lung
Antibody Dilution: 1.0ug/ml