

## Product datasheet for **TA358772**

### ADM2 Rabbit Polyclonal Antibody

#### Product data:

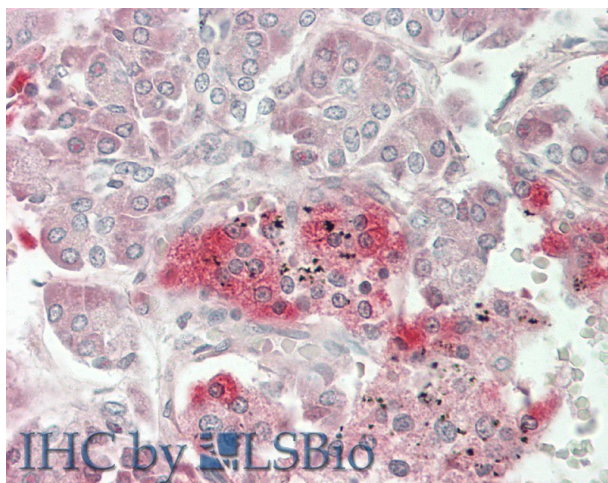
Product Type:	Primary Antibodies
Applications:	IHC
Reactivity:	Human
Host:	Rabbit
Clonality:	Polyclonal
Immunogen:	The immunogen is a synthetic peptide directed towards the following sequence GPRRTQAQLLRVGCVLGTCQVQNLSHRLWQLMGPAGRQDSAPVDPSSPHS
Specificity:	<b>Expected reactivity:</b> Cow, Horse, Human, Mouse, Pig, Rat <b>Homology:</b> Cow: 100%; Horse: 100%; Human: 100%; Mouse: 93%; Pig: 83%; Rat: 93%
Formulation:	Liquid. Purified antibody supplied in 1x PBS buffer with 0.09% (w/v) sodium azide and 2% sucrose.
Concentration:	lot specific
Purification:	Affinity Purified
Conjugation:	Unconjugated
Storage:	For short term use, store at 2-8°C up to 1 week. For long term storage, store at -20°C in small aliquots to prevent freeze-thaw cycles.
Stability:	Shelf life: one year from despatch.
Predicted Protein Size:	16 kDa
Gene Name:	adrenomedullin 2
Database Link:	<a href="#">NP_001240774</a> <a href="#">Entrez Gene 79924 Human Q7Z4H4</a>
Background:	This gene encodes a protein which is a member of the calcitonin-related hormones. The encoded protein is involved in maintaining homeostasis in many tissues, acting via CRLR/RAMP receptor (calcitonin receptor-like receptor/receptor activity-modifying protein) complexes. Multiple alternatively spliced variants, encoding the same protein, have been identified.
Synonyms:	AM2; dj579N16.4; FLJ21135; intermedin; OTTHUMP00000196596



[View online »](#)

Protein Families: Druggable Genome, Secreted Protein

### Product images:



Rabbit Anti-ADM2 antibody  
Catalog Number: ARP64721  
Formalin Fixed Paraffin Embedded Tissue:  
Human Pancreas  
Primary antibody Concentration: 1:100  
Secondary Antibody: Donkey anti-Rabbit-Cy3  
Secondary Antibody Concentration: 1:200  
Magnification: 20x  
Exposure Time: 0.5-2.0sec