

Product datasheet for **TA358765**

MYO15A Rabbit Polyclonal Antibody

Product data:

Product Type:	Primary Antibodies
Applications:	IHC
Reactivity:	Human
Host:	Rabbit
Clonality:	Polyclonal
Immunogen:	The immunogen is a synthetic peptide directed towards the following sequence SASAFFWGLHTGPQTKRKRKARTVLKSTSKLMTQMRMGKKKRAMKGKKP
Specificity:	Expected reactivity: Cow, Dog, Guinea Pig, Human, Mouse, Rat Homology: Cow: 93%; Dog: 93%; Guinea Pig: 93%; Human: 100%; Mouse: 93%; Rat: 93%
Formulation:	Liquid. Purified antibody supplied in 1x PBS buffer with 0.09% (w/v) sodium azide and 2% sucrose.
Concentration:	lot specific
Purification:	Affinity Purified
Conjugation:	Unconjugated
Storage:	For short term use, store at 2-8°C up to 1 week. For long term storage, store at -20°C in small aliquots to prevent freeze-thaw cycles.
Stability:	Shelf life: one year from despatch.
Predicted Protein Size:	395 kDa
Gene Name:	myosin XVA
Database Link:	NP_057323 Entrez Gene 51168 Human Q9UKN7



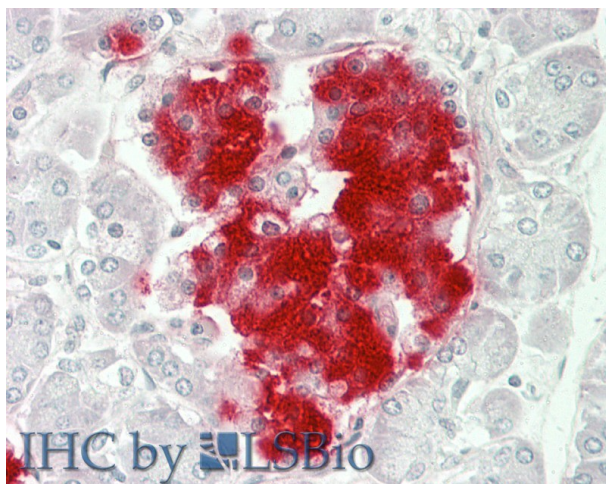
[View online »](#)

Background:

This gene encodes an unconventional myosin. This protein differs from other myosins in that it has a long N-terminal extension preceding the conserved motor domain. Studies in mice suggest that this protein is necessary for actin organization in the hair cells of the cochlea. Mutations in this gene have been associated with profound, congenital, neurosensory, nonsyndromal deafness. This gene is located within the Smith-Magenis syndrome region on chromosome 17. Read-through transcripts containing an upstream gene and this gene have been identified, but they are not thought to encode a fusion protein. Several alternatively spliced transcript variants have been described, but their full length sequences have not been determined.

Synonyms:

DFNB3; DKFZp686N18198; FLJ17274; FLJ31311; MYO15

Product images:

Rabbit Anti-MYO15A antibody
Catalog Number: ARP64703
Formalin Fixed Paraffin Embedded Tissue:
Human Pancreas
Primary antibody Concentration: 1:100
Secondary Antibody: Donkey anti-Rabbit-Cy3
Secondary Antibody Concentration: 1:200
Magnification: 20x
Exposure Time: 0.5-2.0sec