

Product datasheet for **TA358764**

P2Y9 (LPAR4) Rabbit Polyclonal Antibody

Product data:

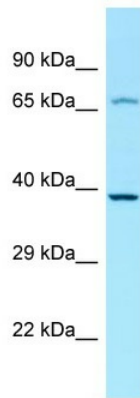
Product Type:	Primary Antibodies
Applications:	WB
Reactivity:	Human
Host:	Rabbit
Clonality:	Polyclonal
Specificity:	Expected reactivity: Cow, Dog, Horse, Human, Mouse, Pig, Rabbit, Rat Homology: Cow: 86%; Dog: 93%; Horse: 93%; Human: 100%; Mouse: 100%; Pig: 86%; Rabbit: 100%; Rat: 100%
Formulation:	Liquid. Purified antibody supplied in 1x PBS buffer with 0.09% (w/v) sodium azide and 2% sucrose. <i>Note that this product is shipped as lyophilized powder to China customers.</i>
Concentration:	lot specific
Purification:	Affinity Purified
Conjugation:	Unconjugated
Storage:	For short term use, store at 2-8°C up to 1 week. For long term storage, store at -20°C in small aliquots to prevent freeze-thaw cycles.
Stability:	Shelf life: one year from despatch.
Predicted Protein Size:	42kDa
Gene Name:	lysophosphatidic acid receptor 4
Database Link:	NP_005287 Entrez Gene 2846 Human Q99677
Background:	This gene encodes a member of the lysophosphatidic acid receptor family. It may also be related to the P2Y receptors, a family of receptors that bind purine and pyrimidine nucleotides and are coupled to G proteins. The encoded protein may play a role in monocytic differentiation.
Synonyms:	GPR23; LPA-4; LPA4; P2RY9; P2Y5-LIKE; P2Y9
Protein Families:	Druggable Genome, GPCR, Transmembrane



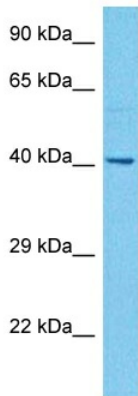
[View online »](#)

Protein Pathways: Neuroactive ligand-receptor interaction

Product images:



WB Suggested Anti-LPAR4 Antibody
 Titration: 1.0 ug/ml
 Positive Control: RPMI-8226 Whole Cell LPAR4 is supported by BioGPS gene expression data to be expressed in RPMI 8226



Host: Rabbit
 Target Name: LPAR4
 Sample Type: 293T Cell Lysate
 Antibody Dilution: 1.0µg/ml

Host: Rabbit
 Target Name: LPAR4
 Sample Tissue: Human 293T Whole Cell
 Antibody Dilution: 1ug/ml