

Product datasheet for **TA358762**

CTR9 Rabbit Polyclonal Antibody

Product data:

Product Type:	Primary Antibodies
Applications:	WB
Reactivity:	Human
Host:	Rabbit
Clonality:	Polyclonal
Specificity:	Expected reactivity: Cow, Dog, Guinea Pig, Horse, Human, Mouse, Pig, Rat Homology: Cow: 93%; Dog: 100%; Guinea Pig: 86%; Horse: 100%; Human: 100%; Mouse: 93%; Pig: 93%; Rat: 93%
Formulation:	Liquid. Purified antibody supplied in 1x PBS buffer with 0.09% (w/v) sodium azide and 2% sucrose. <i>Note that this product is shipped as lyophilized powder to China customers.</i>
Concentration:	lot specific
Purification:	Affinity Purified
Conjugation:	Unconjugated
Storage:	For short term use, store at 2-8°C up to 1 week. For long term storage, store at -20°C in small aliquots to prevent freeze-thaw cycles.
Stability:	Shelf life: one year from despatch.
Predicted Protein Size:	133kDa
Gene Name:	CTR9 homolog, Paf1/RNA polymerase II complex component
Database Link:	NP_055448 Entrez Gene 9646 Human Q6PD62
Background:	CTR9, parafibromin, LEO1, and PAF1 form the PAF protein complex, which associates with the RNA polymerase II subunit POLR2A and with a histone methyltransferase complex.
Synonyms:	KIAA0155; p150; p150TSP; SH2BP1; TSBP
Protein Families:	Protease



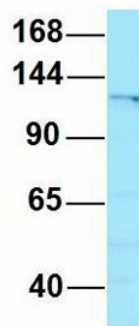
[View online »](#)

Product images:



WB Suggested Anti-CTR9 Antibody
 Titration: 1.0 ug/ml
 Positive Control: Jurkat Whole Cell
 CTR9 is supported by BioGPS gene expression data to be expressed in Jurkat

CTR9



Rabbit Anti-CTR9
 Sample Type: Human 721_B
 Antibody Concentration: 1ug/mL

Host: Rabbit
 Target Name: CTR9
 Sample Type: Human 721_B
 Antibody Dilution: 1.0ug/ml
 CTR9 is supported by BioGPS gene expression data to be expressed in 721_B