

Product datasheet for **TA358758**

CILP Rabbit Polyclonal Antibody

Product data:

Product Type:	Primary Antibodies
Applications:	WB
Reactivity:	Human
Host:	Rabbit
Clonality:	Polyclonal
Specificity:	Expected reactivity: Cow, Dog, Horse, Human, Mouse, Pig, Rabbit, Rat Homology: Cow: 86%; Dog: 93%; Horse: 93%; Human: 100%; Mouse: 93%; Pig: 93%; Rabbit: 93%; Rat: 93%
Formulation:	Liquid. Purified antibody supplied in 1x PBS buffer with 0.09% (w/v) sodium azide and 2% sucrose. <i>Note that this product is shipped as lyophilized powder to China customers.</i>
Concentration:	lot specific
Purification:	Affinity Purified
Conjugation:	Unconjugated
Storage:	For short term use, store at 2-8°C up to 1 week. For long term storage, store at -20°C in small aliquots to prevent freeze-thaw cycles.
Stability:	Shelf life: one year from despatch.
Predicted Protein Size:	52kDa
Gene Name:	cartilage intermediate layer protein
Database Link:	NP_003604 Entrez Gene 8483 Human O75339



[View online »](#)

Background:

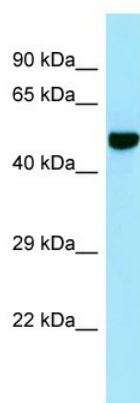
Major alterations in the composition of the cartilage extracellular matrix occur in joint disease, such as osteoarthritis. This gene encodes the cartilage intermediate layer protein (CILP), which increases in early osteoarthritis cartilage. The encoded protein was thought to encode a protein precursor for two different proteins; an N-terminal CILP and a C-terminal homolog of NTPPHase, however, later studies identified no nucleotide pyrophosphatase phosphodiesterase (NPP) activity. The full-length and the N-terminal domain of this protein was shown to function as an IGF-1 antagonist. An allelic variant of this gene has been associated with lumbar disc disease.

Synonyms:

CILP-1; HsT18872

Protein Families:

Druggable Genome, Phosphatase, Secreted Protein

Product images:

WB Suggested Anti-CILP Antibody
Titration: 1.0 ug/ml
Positive Control: 721_B Whole Cell