

Product datasheet for **TA358757**

SUCLA2 Rabbit Polyclonal Antibody

Product data:

Product Type:	Primary Antibodies
Applications:	WB
Reactivity:	Human
Host:	Rabbit
Clonality:	Polyclonal
Specificity:	Expected reactivity: Cow, Dog, Guinea Pig, Horse, Human, Mouse, Pig, Rabbit, Rat Homology: Cow: 100%; Dog: 86%; Guinea Pig: 93%; Horse: 100%; Human: 100%; Mouse: 86%; Pig: 100%; Rabbit: 100%; Rat: 93%
Formulation:	Liquid. Purified antibody supplied in 1x PBS buffer with 0.09% (w/v) sodium azide and 2% sucrose. <i>Note that this product is shipped as lyophilized powder to China customers.</i>
Concentration:	lot specific
Purification:	Affinity Purified
Conjugation:	Unconjugated
Storage:	For short term use, store at 2-8°C up to 1 week. For long term storage, store at -20°C in small aliquots to prevent freeze-thaw cycles.
Stability:	Shelf life: one year from despatch.
Predicted Protein Size:	45kDa
Gene Name:	succinate-CoA ligase ADP-forming beta subunit
Database Link:	NP_003841 Entrez Gene 8803 Human Q9P2R7
Background:	Succinyl-CoA synthetase (SCS) is a mitochondrial matrix enzyme that acts as a heterodimer, being composed of an invariant alpha subunit and a substrate-specific beta subunit. The protein encoded by this gene is an ATP-specific SCS beta subunit that dimerizes with the SCS alpha subunit to form SCS-A, an essential component of the tricarboxylic acid cycle. SCS-A hydrolyzes ATP to convert succinate to succinyl-CoA. Defects in this gene are a cause of myopathic mitochondrial DNA depletion syndrome. A pseudogene of this gene has been found on chromosome 6.

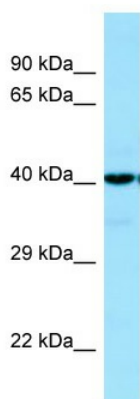


[View online »](#)

Synonyms: A-BETA; SCS-betaA

Protein Pathways: Citrate cycle (TCA cycle), Metabolic pathways, Propanoate metabolism

Product images:



WB Suggested Anti-SUCLA2 Antibody
Titration: 1.0 ug/ml
Positive Control: Fetal Heart